

**PINYA TECHNOLOGY,
DO WELL IN EVERY
PRODUCT**

品亚科技，用心做好每一个产品



PinYo
品亞科技

COMPANY

PROFILE

公司简介

深圳市品亚科技有限公司是一家集研发、制造、销售与服务为一体的科技创造型企业。

公司主要研发与制造微型水泵、真空泵、气泵及微型电磁阀、水阀等精密控制产品。供应领域有医疗电子、按摩器械、美容美体、家用电器、卫浴、检测分析等，提供专业泵阀产品与解决方案。

本公司拥有优秀的技术团队，先进的生产设备，拥有完整、科学的质量管理体系。品亚科技以卓越的技术力量，严谨的科学态度，创新的服务理念，以合理的价格、优良的产品和服务与多家企业建立了长期的合作关系。

公司热诚欢迎各界商友莅临参观、考察、洽谈业务。



Monthly Production

月生产量

5000000台



Plant Area

厂房面积

15000m²



Annual Turnover

年营业额

2.0+亿



Researchers

研发人员

20+



Staff

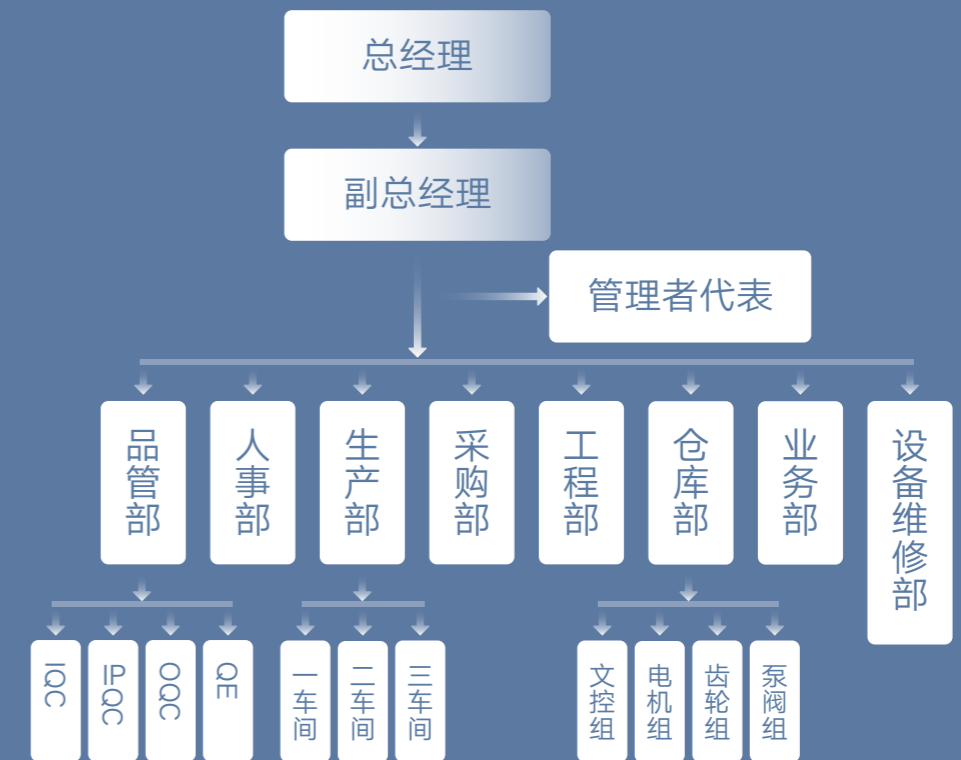
员工人数

400+



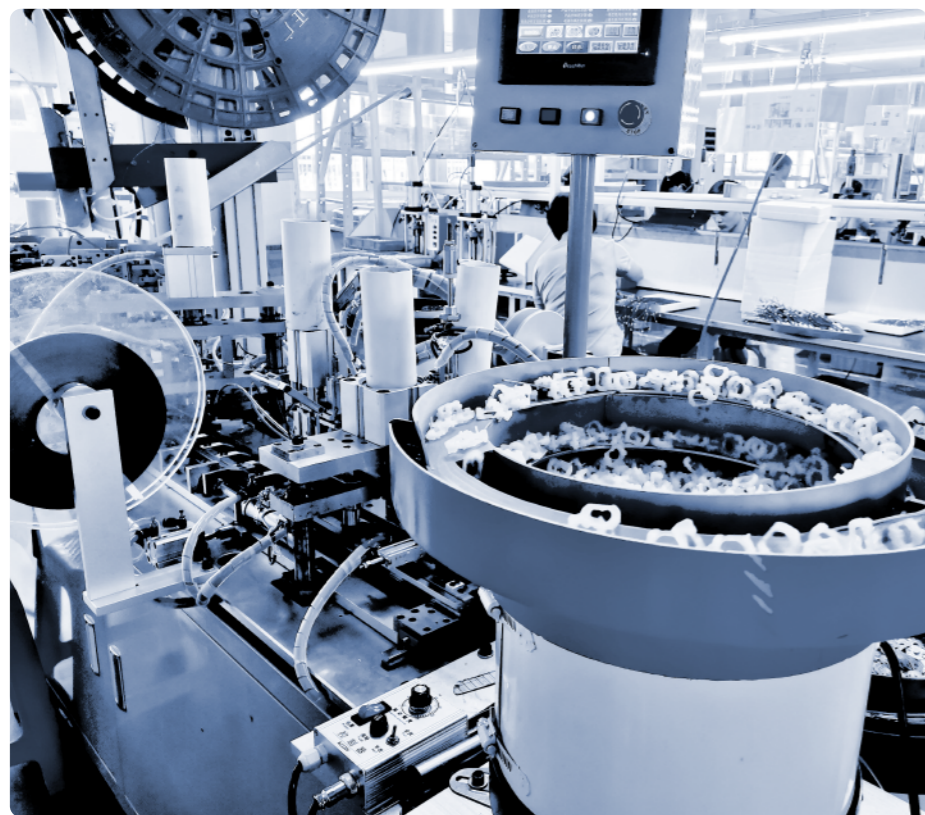
ORGANIZATION CHART

组织结构图

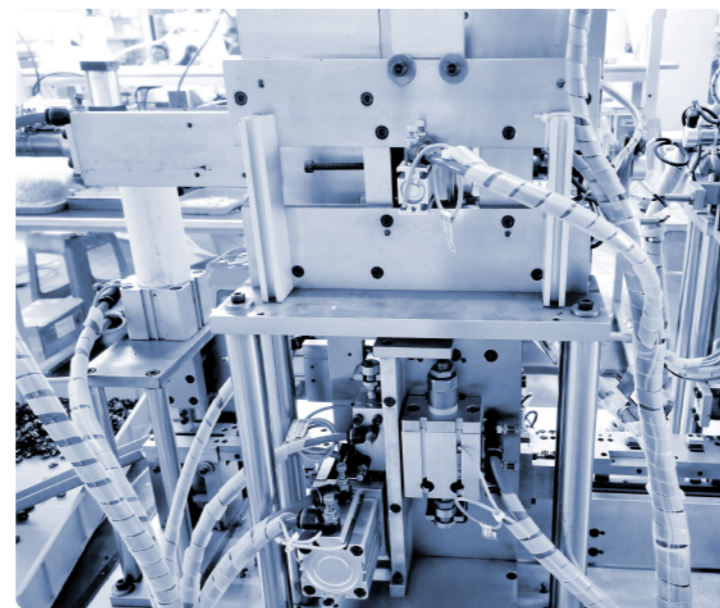
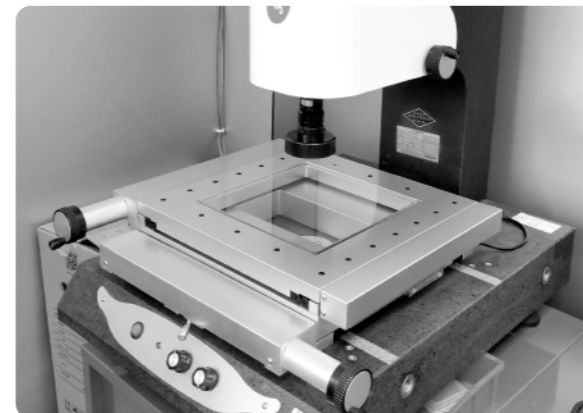


FACTORY REALITY 工厂实景

公司现拥有固定资产 2500 万，厂房面积达 15000 平方米和配套宿舍。半自动绕线机 20 台，全自动绕线机 12 台，半自动充入磁机 8 台，全自动充入磁机 6 台，自动组装机 2 台，全新现代化双边生产线 18 条。



PINYA TECHNOLOGY, YOUR SAFE CHOICE!



品亚科技，您的安心选择！

荣获多项权威专利证书、检测报告
SGS 验证报告、实用新型专利证书、环测威检测、
CE 认证、fc 认证、rosh 认证等 ...

CATALOG 目录 PRODUCT

A FOAMING PUMP 发泡泵

PYFP310-XA	01
PYFP310-XB	02
PYFP310-XC	03
PYFP310-XD	04
PYFP310-XE	05
PYFP310-XF	06

B WATER PUMP 水泵

PYSP130-XA	07
PYSP310-XA	08
PYSP310-XC	09
PYSP370-XA	10
PYSP370-XB	11
PYSP370-XC	12
PYSP370-XE	13
PYSP370-XF	14
PYSP365-XA	15

C AIR PUMP 气泵

PYP032-XA	16
PYP030-XA	17
PYP130-XA	19
PYP310-XA	19
PYP310-XB	20
PYP370-XA	21
PYP370-XB	22
PYP370-XC	23
PYP370-XD	24
PYP520-XA	25

D VACUUM PUMP 真空泵

PYP030-XZ	26
PYP130-XZ (Φ19)	27
PYP130-XH (Φ21)	28
PYP310-XZA	29
PYP310-XZB	30
PYP370-XZA	31
PYP370-XZB	32
PYP370-XZC	33
PYP520-XZ	34
PYP528-XA	35
PYP528-XB	36
PYP555-XA	37
PYP555-XB	38
PYP3035-XA	39

E PISTON VACUUM PUMP 活塞泵

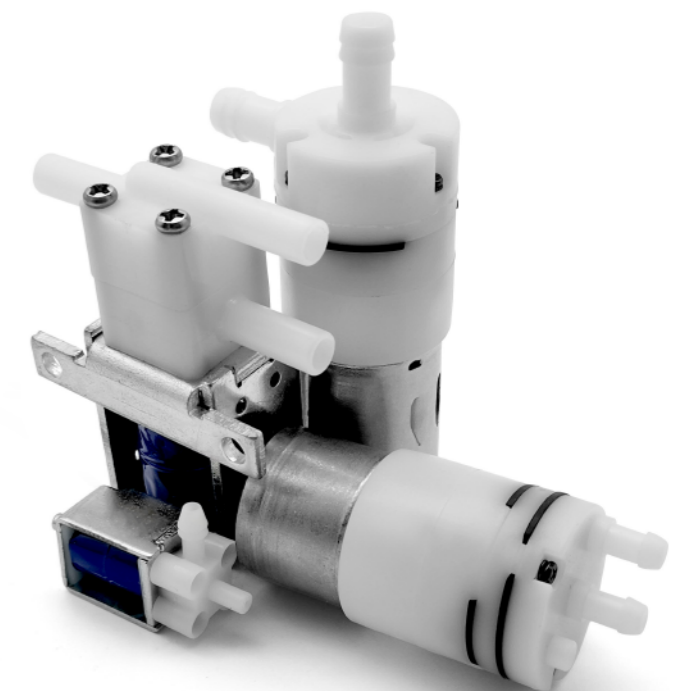
PYP385-XZ	40
PYP395-XZ	41
PYP555-XZ	42

F LIQUID PUMP 蠕动泵

PYRP310-XA	43
PYRP500-XA	44

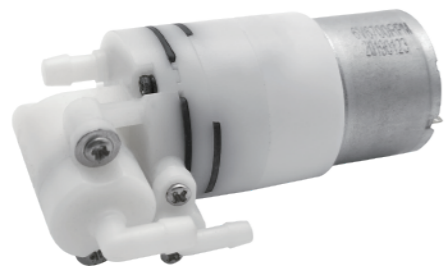
G SOLENOID VALVE 电磁阀

PYF1-XA	45
PYF1-XB	46
PYF1-XD	47
PYF2-XZ	48
PYF2-XA	49
PYF2-XB	50
PYF3-XA	51
PYF3-XB	52
PYF3-XF	53
PYF3-XEA	54
PYF3-XEB	55
PYF3-XN	56
PYF3-XL	57
PYF2-XG	58
PYF3-XG	59
PYF3-XM	60



PYFP310-XA (A款发泡泵)

发泡泵
FOAMING PUMP

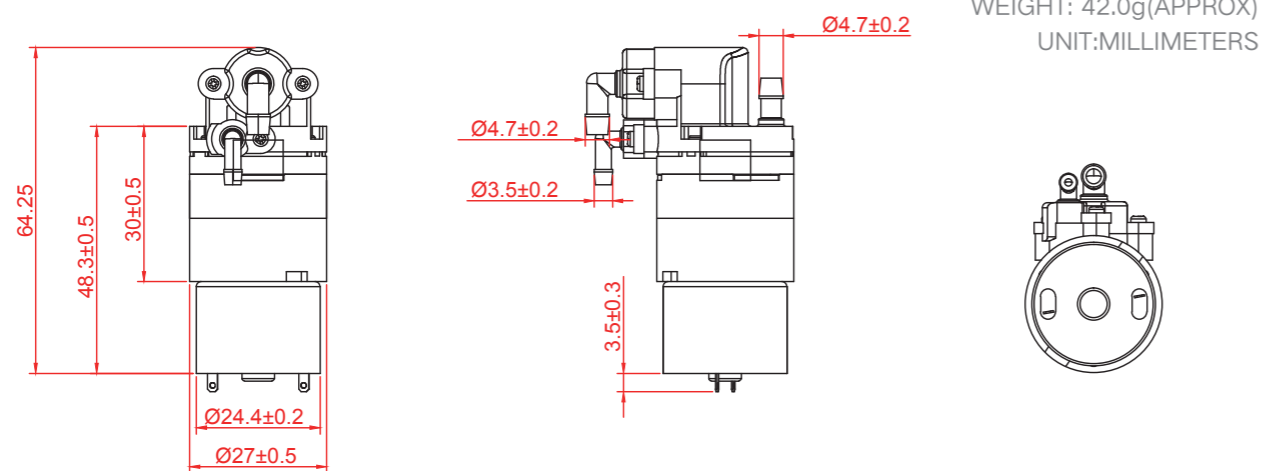


典型应用 Typical Applications

- Home appliances, medical, beauty, massage, adult products
家用电器、医疗、美容、按摩、成人用品
- Hand sanitizer foaming machine
洗手液发泡机
- 特点: 泵自带发泡器

外形尺寸

Dimension



产品规格

Product Specifications

额定电压 Rated Voltage	DC 3V	DC 3.7V	DC 4.5V	DC 6V
额定电流 Rated Current	≤750mA	≤600mA	≤500mA	≤350mA
功率 Power	2.2 W	2.2 W	2.2 W	2.2 W
气嘴口径 Air Tap O.D.	Ø4.7mm			
抽液量 Water flow	30-100 mLPM			
气体流量 Air Flow	1.5-3.0 LPM			
噪音 Noise Level	≤65db (30cm away)			
寿命测试 Life Test	≥ 100,000 Times (ON 2秒, OFF 2秒)			
扬程 Pump Head	≥0.5m			
吸程 Suction Head	≥0.5m			
重量 Weight	42g			

* Other parameters: according to customer demand for design/其他参数: 根据客户的需求设计.

PYFP310-XB (B款发泡泵)

发泡泵
FOAMING PUMP

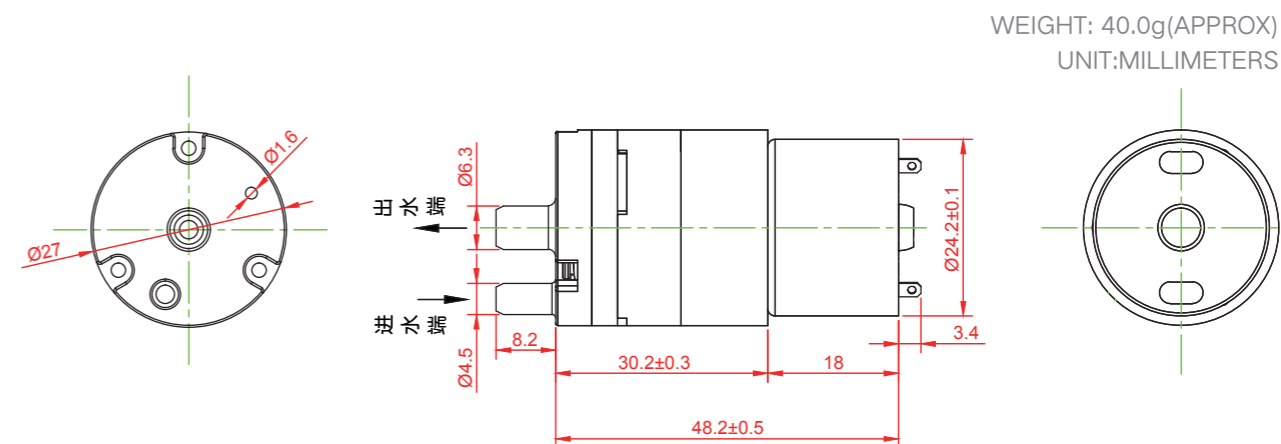


典型应用 Typical Applications

- Home appliances, medical, beauty, massage, adult products
家用电器、医疗、美容、按摩、成人用品
- Hand sanitizer foaming machine
洗手液发泡机

外形尺寸

Dimension



产品规格

Product Specifications

额定电压 Rated Voltage	DC 3V	DC 3.7V	DC 4.5V	DC 6V
额定电流 Rated Current	≤750mA	≤600mA	≤500mA	≤350mA
功率 Power	2.2 W	2.2 W	2.2 W	2.2 W
气嘴口径 Air Tap O.D.	Ø6.3mm			
抽液量 Water flow	30-100 mLPM			
气体流量 Air Flow	1.5-3.0 LPM			
噪音 Noise Level	≤65db (30cm away)			
寿命测试 Life Test	≥ 100,000 Times (ON 2秒, OFF 2秒)			
扬程 Pump Head	≥0.5m			
吸程 Suction Head	≥0.5m			
重量 Weight	40g			

* Other parameters: according to customer demand for design/其他参数: 根据客户的需求设计.

PYFP310-XC (C款发泡泵)

发泡泵
FOAMING PUMP



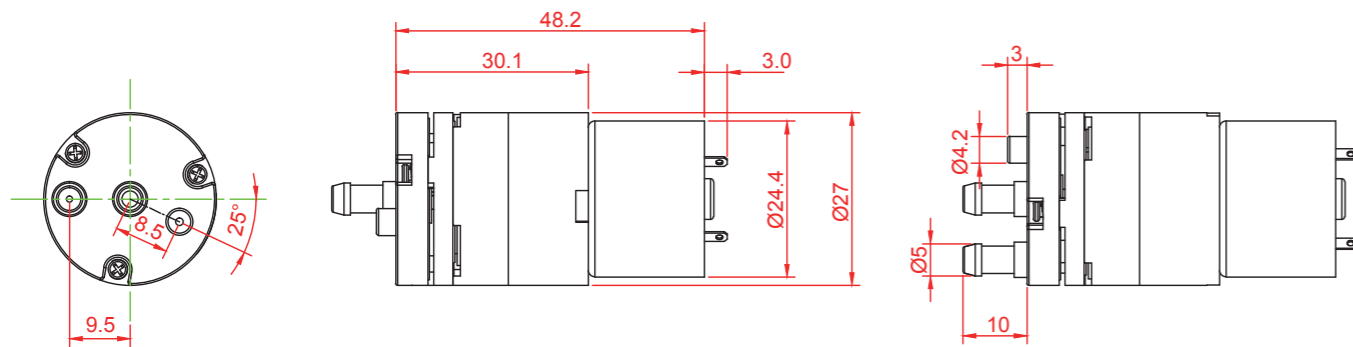
典型应用 Typical Applications

- Home appliances, medical, beauty, massage, adult products
家用电器、医疗、美容、按摩、成人用品
- Hand sanitizer foaming machine
洗手液发泡机

外形尺寸

Dimension

WEIGHT:40.0g(APPROX)
UNIT:MILLIMETERS



产品规格

Product Specifications

额定电压 Rated Voltage	DC 3V	DC 3.7V	DC 4.5V	DC 6V
额定电流 Rated Current	≤750mA	≤600mA	≤500mA	≤350mA
功率 Power	2.2 W	2.2 W	2.2 W	2.2 W
气嘴口径 Air Tap O.D.	Ø5.0mm			
抽液量 Water flow	30-100 mLPM			
气体流量 Air Flow	1.5-3.0 LPM			
噪音 Noise Level	≤65db (30cm away)			
寿命测试 Life Test	≥ 100,000 Times (ON 2秒, OFF 2秒)			
扬程 Pump Head	≥0.5m			
吸程 Suction Head	≥0.5m			
重量 Weight	40g			

* Other parameters: according to customer demand for design/其他参数：根据客户的需求设计。

PYFP310-XD (D款发泡泵)

发泡泵
FOAMING PUMP



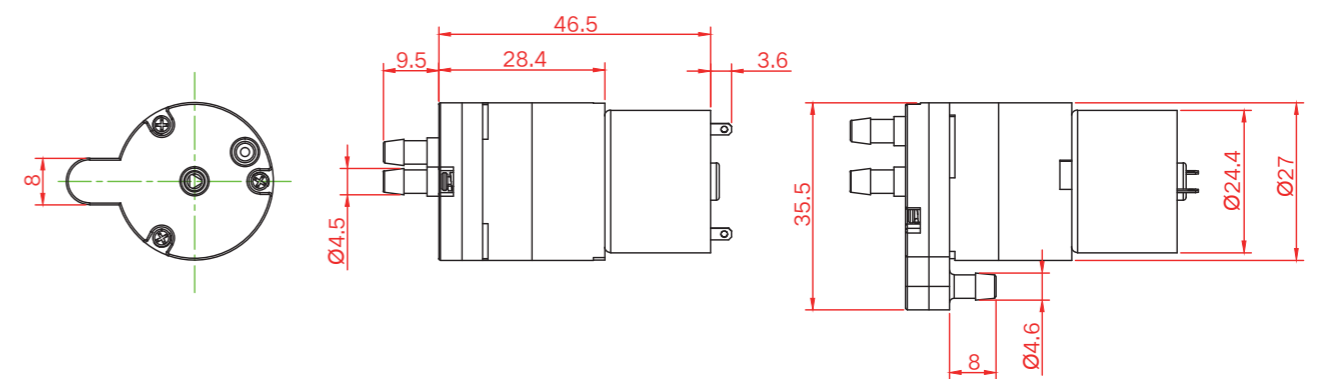
典型应用 Typical Applications

- Home appliances, medical, beauty, massage, adult products
家用电器、医疗、美容、按摩、成人用品
- Hand sanitizer foaming machine
洗手液发泡机

外形尺寸

Dimension

WEIGHT:40.0g(APPROX)
UNIT:MILLIMETERS



产品规格

Product Specifications

额定电压 Rated Voltage	DC 3V	DC 3.7V	DC 4.5V	DC 6V
额定电流 Rated Current	≤750mA	≤600mA	≤500mA	≤350mA
功率 Power	2.2 W	2.2 W	2.2 W	2.2 W
气嘴口径 Air Tap O.D.	Ø4.5mm			
抽液量 Water flow	30-100 mLPM			
气体流量 Air Flow	1.5-3.0 LPM			
噪音 Noise Level	≤65db (30cm away)			
寿命测试 Life Test	≥ 100,000 Times (ON 2秒, OFF 2秒)			
扬程 Pump Head	≥0.5m			
吸程 Suction Head	≥0.5m			
重量 Weight	40g			

* Other parameters: according to customer demand for design/其他参数：根据客户的需求设计。

PYFP310-XE (E款发泡泵)

发泡泵
FOAMING PUMP



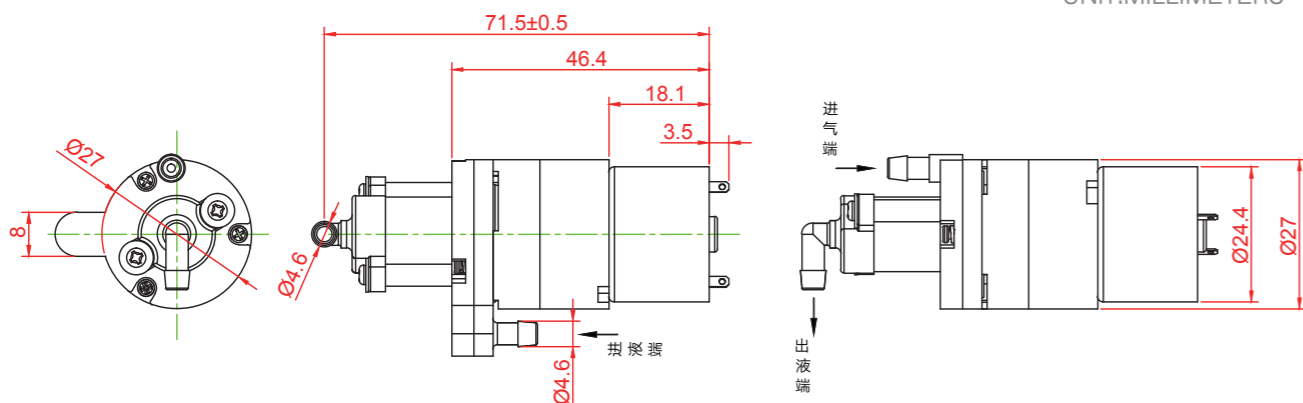
典型应用 Typical Applications

- Home appliances, medical, beauty, massage, adult products
家用电器、医疗、美容、按摩、成人用品
- Hand sanitizer foaming machine
洗手液发泡机
- 特点: 泵自带发泡器

外形尺寸

Dimension

WEIGHT:40.0g(APPROX)
UNIT:MILLIMETERS



产品规格

Product Specifications

额定电压 Rated Voltage	DC 3V	DC 3.7V	DC 4.5V	DC 6V
额定电流 Rated Current	≤750mA	≤600mA	≤500mA	≤350mA
功率 Power	2.2 W	2.2 W	2.2 W	2.2 W
气嘴口径 Air Tap O.D.	Ø4.6mm			
抽液量 Water flow	30-100 mLPM			
气体流量 Air Flow	1.5-3.0 LPM			
噪音 Noise Level	≤65db (30cm away)			
寿命测试 Life Test	≥ 100,000 Times (ON 2秒, OFF 2秒)			
扬程 Pump Head	≥0.5m			
吸程 Suction Head	≥0.5m			
重量 Weight	40g			

* Other parameters: according to customer demand for design/其他参数: 根据客户的需求设计.

PYFP310-XF (F款发泡泵)

发泡泵
FOAMING PUMP



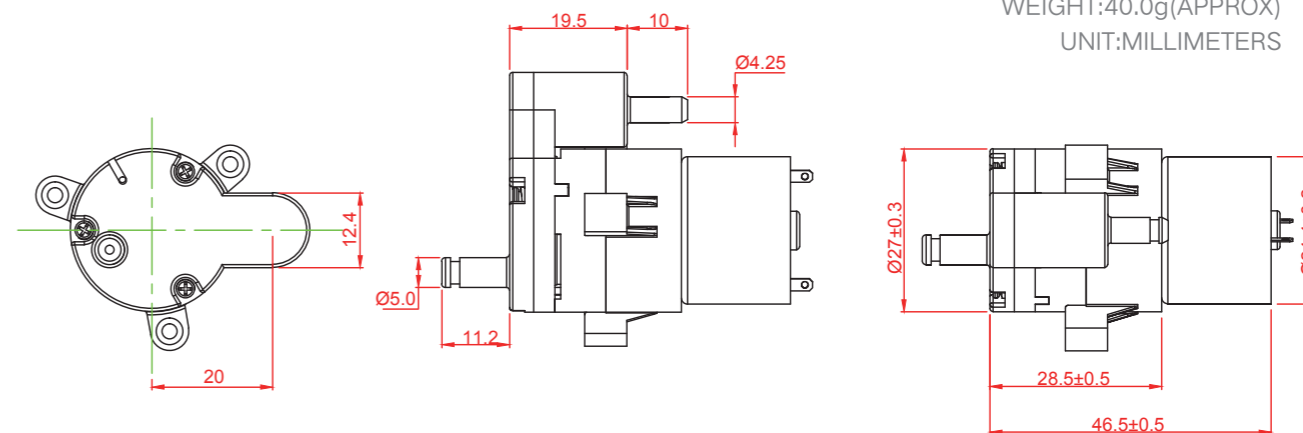
典型应用 Typical Applications

- Home appliances, medical, beauty, massage, adult products
家用电器、医疗、美容、按摩、成人用品
- Hand sanitizer foaming machine
洗手液发泡机
- 特点: 泵自带发泡器

外形尺寸

Dimension

WEIGHT:40.0g(APPROX)
UNIT:MILLIMETERS



产品规格

Product Specifications

额定电压 Rated Voltage	DC 3V	DC 3.7V	DC 4.5V	DC 6V
额定电流 Rated Current	≤750mA	≤600mA	≤500mA	≤350mA
功率 Power	2.2 W	2.2 W	2.2 W	2.2 W
气嘴口径 Air Tap O.D.	Ø6.0mm			
抽液量 Water flow	30-100 mLPM			
气体流量 Air Flow	1.5-3.0 LPM			
噪音 Noise Level	≤65db (30cm away)			
寿命测试 Life Test	≥ 100,000 Times (ON 2秒, OFF 2秒)			
扬程 Pump Head	≥0.5m			
吸程 Suction Head	≥0.5m			
重量 Weight	40g			

* Other parameters: according to customer demand for design/其他参数: 根据客户的需求设计.

PYSP130-XA (水泵)

水泵
WATER PUMP



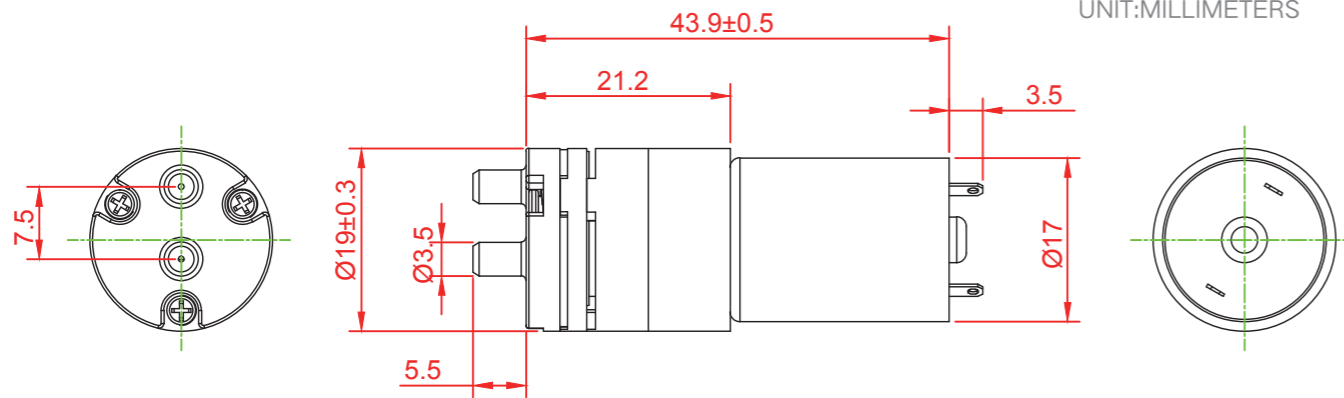
典型应用 Typical Applications

- Home appliances, medical, beauty, massage, adult products
家用电器、医疗、美容、按摩、成人用品
- Flower sprinklers, water dispensers, air conditioning drainage pumps, Medical equipment, Booster technology
花洒、饮水机、空调排水泵、医疗设备、增压技术

外形尺寸

Dimension

WEIGHT: 26.0g (APPROX)
UNIT: MILLIMETERS



产品规格

Product Specifications

额定电压 Rated Voltage	DC 3V	DC 3.7V	DC 6V
额定电流 Rated Current	≤750mA	≤600mA	≤370mA
功率 Power	2.2 W	2.2 W	2.2 W
气嘴口径 Air Tap O.D.	Ø3.5mm		
最大水压 Maximum Water Pressure	≥30 psi (200kpa)		
水流量 Water flow	0.2-0.4 LPM		
噪音 Noise Level	≤65db (30cm away)		
寿命测试 Life Test	≥100 hours (连续)		
扬程 Pump Head	≥1m		
吸程 Suction Head	≥1m		
重量 Weight	26g		

* Other parameters: according to customer demand for design/其他参数：根据客户的需求设计。

PYSP310-XA (A款水泵)

水泵
WATER PUMP



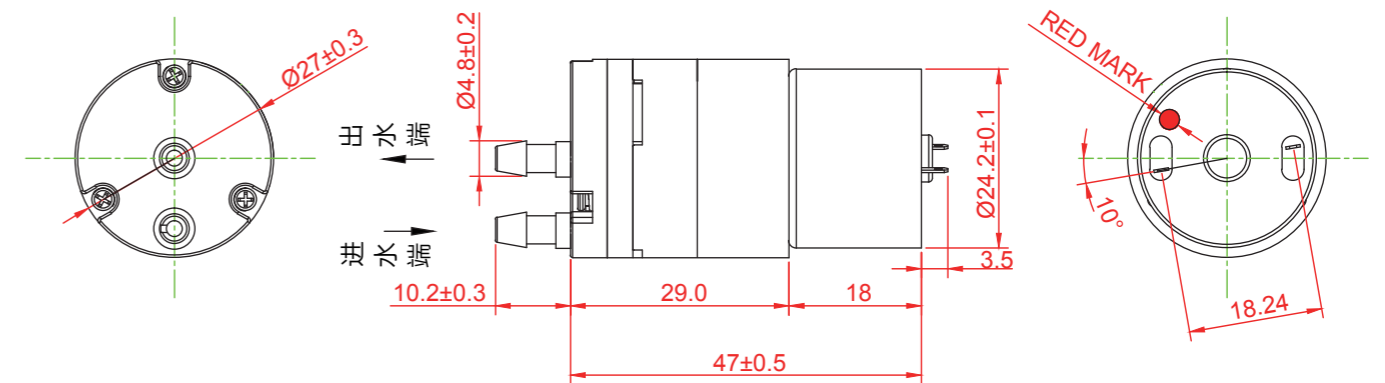
典型应用 Typical Applications

- Home appliances, medical, beauty, massage, adult products
家用电器、医疗、美容、按摩、成人用品
- Flower sprinklers, water dispensers, air conditioning drainage pumps, Medical equipment, Booster technology
花洒、饮水机、空调排水泵、医疗设备、增压技术

外形尺寸

Dimension

WEIGHT: 40.0g (APPROX)
UNIT: MILLIMETERS



产品规格

Product Specifications

额定电压 Rated Voltage	DC 3V	DC 6V	DC 9V	DC 12V
额定电流 Rated Current	≤1200mA	≤600mA	≤400mA	≤300mA
功率 Power	3.6 W	3.6 W	3.6 W	3.6 W
气嘴口径 Air Tap O.D.	Ø4.8mm			
最大水压 Maximum Water Pressure	≥30 psi (200kpa)			
水流量 Water flow	0.3-0.8 LPM			
噪音 Noise Level	≤65db (30cm away)			
寿命测试 Life Test	≥200 hours (连续)			
扬程 Pump Head	≥2m			
吸程 Suction Head	≥2m			
重量 Weight	40g			

* Other parameters: according to customer demand for design/其他参数：根据客户的需求设计。

PYSP310-XC (C款水泵)

水泵
WATER PUMP



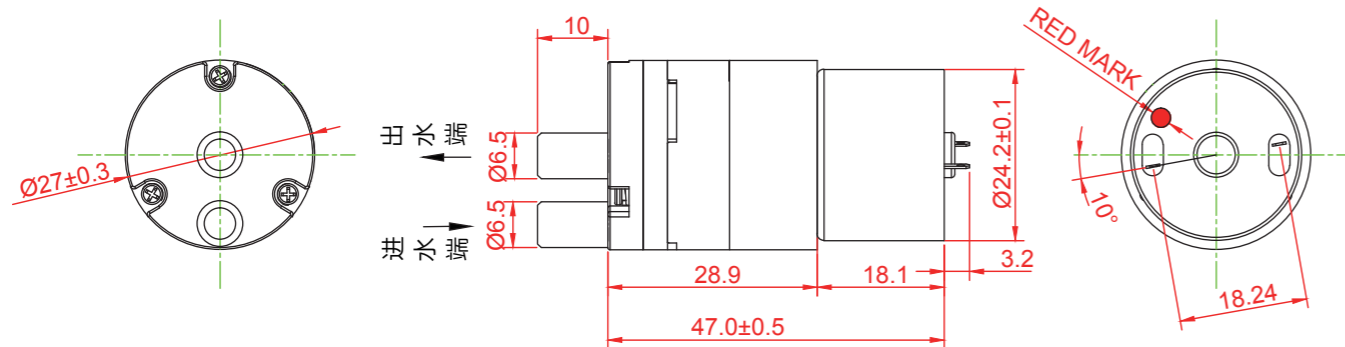
典型应用 Typical Applications

- Home appliances, medical, beauty, massage, adult products
家用电器、医疗、美容、按摩、成人用品
- Flower sprinklers, water dispensers, air conditioning drainage pumps, Medical equipment, Booster technology
花洒、饮水机、空调排水泵、医疗设备、增压技术

外形尺寸

Dimension

WEIGHT:40.0g(APPROX)
UNIT:MILLIMETERS



产品规格

Product Specifications

额定电压 Rated Voltage	DC 3V	DC 6V	DC 9V	DC 12V
额定电流 Rated Current	≤1200mA	≤600mA	≤400mA	≤300mA
功率 Power	3.6 W	3.6 W	3.6 W	3.6 W
气嘴口径 Air Tap O.D.	Ø6.5mm			
最大水压 Maximum Water Pressure	≥30 psi (200kpa)			
水流量 Water flow	0.3-1.2 LPM			
漏水 Leakage	20PSI NO leakage			
噪音 Noise Level	≤65db (30cm away)			
寿命测试 Life Test	≥200 hours (连续)			
扬程 Pump Head	≥2m			
吸程 Suction Head	≥2m			
重量 Weight	40g			

* Other parameters: according to customer demand for design/其他参数: 根据客户的需求设计.

PYSP370-XA (A款水泵)

水泵
WATER PUMP



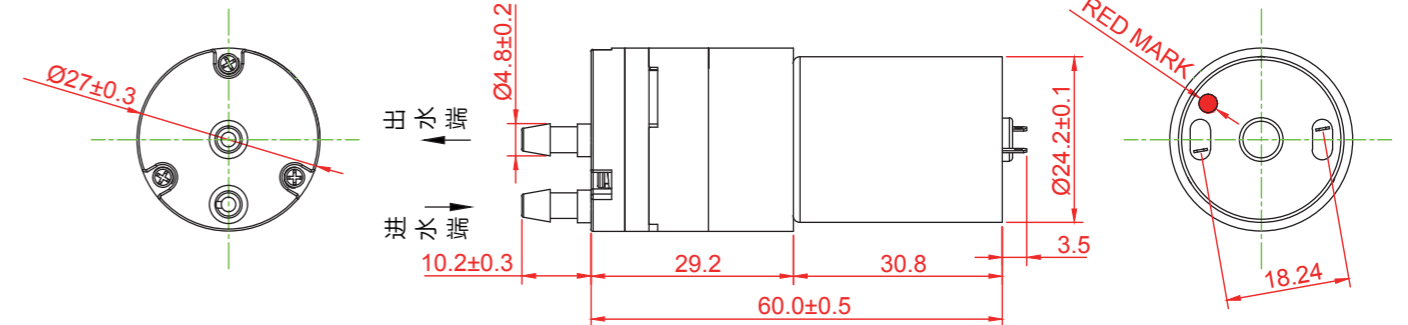
典型应用 Typical Applications

- Home appliances, medical, beauty, massage, adult products
家用电器、医疗、美容、按摩、成人用品
- Flower sprinklers, water dispensers, air conditioning drainage pumps, Medical equipment, Booster technology
花洒、饮水机、空调排水泵、医疗设备、增压技术

外形尺寸

Dimension

WEIGHT:60.0g(APPROX)
UNIT:MILLIMETERS



产品规格

Product Specifications

额定电压 Rated Voltage	DC 3V	DC 6V	DC 9V	DC 12V	DC 24V
额定电流 Rated Current	≤1200mA	≤600mA	≤400mA	≤300mA	≤150mA
功率 Power	3.6 W	3.6 W	3.6 W	3.6 W	3.6 W
气嘴口径 Air Tap O.D.	Ø4.8mm				
最大水压 Maximum Water Pressure	≥30 psi (200kpa)				
水流量 Water flow	0.3-0.8 LPM				
漏水 Leakage	20PSI NO leakage				
噪音 Noise Level	≤65db (30cm away)				
寿命测试 Life Test	≥500 hours (连续)				
扬程 Pump Head	≥5m				
吸程 Suction Head	≥5m				
重量 Weight	60g				

* Other parameters: according to customer demand for design/其他参数: 根据客户的需求设计.

PYSP370-XB (B款水泵)

水泵
WATER PUMP

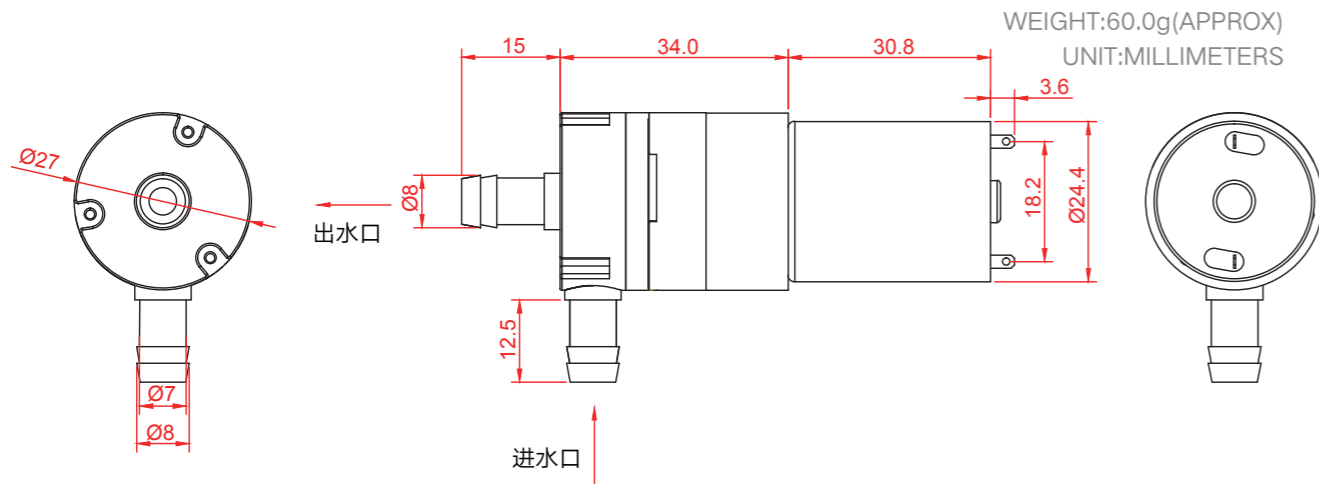


典型应用 Typical Applications

- Home appliances, medical, beauty, massage, adult products
家用电器、医疗、美容、按摩、成人用品
- Flower sprinklers, water dispensers, air conditioning drainage pumps, Medical equipment, Booster technology
花洒、饮水机、空调排水泵、医疗设备、增压技术

外形尺寸

Dimension



产品规格

Product Specifications

额定电压 Rated Voltage	DC 3V	DC 6V	DC 9V	DC 12V	DC 24V
额定电流 Rated Current	≤1200mA	≤600mA	≤400mA	≤300mA	≤150mA
功率 Power	3.6 W	3.6 W	3.6 W	3.6 W	3.6 W
气嘴口径 Air Tap O.D.	Ø8.0mm				
最大水压 Maximum Water Pressure	≥30 psi (200kpa)				
水流量 Water flow	0.3-1.2 LPM				
噪音 Noise Level	≤65db (30cm away)				
寿命测试 Life Test	≥500 hours (连续)				
扬程 Pump Head	≥5m				
吸程 Suction Head	≥5m				
重量 Weight	60g				

* Other parameters: according to customer demand for design/其他参数：根据客户的需求设计。

PYSP370-XC (C款水泵)

水泵
WATER PUMP

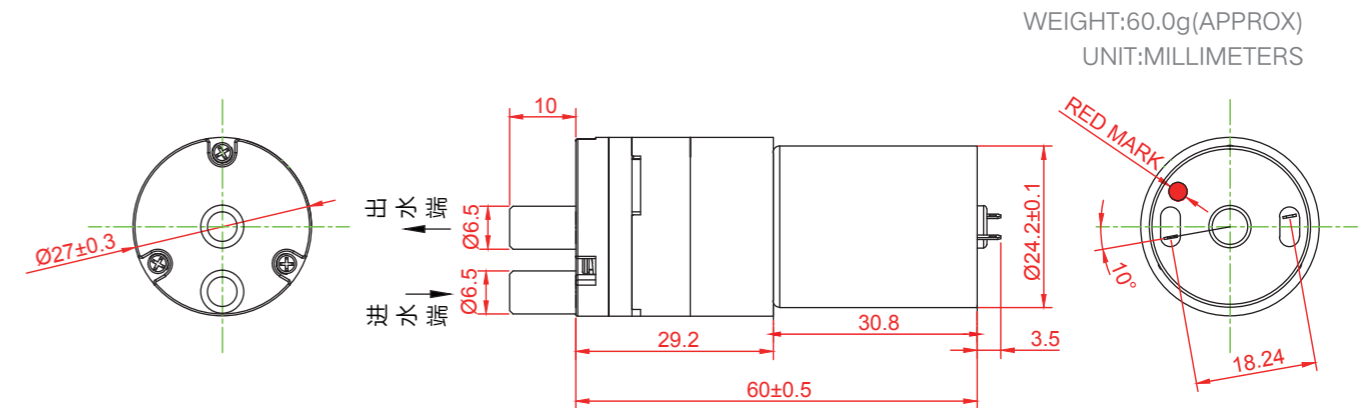


典型应用 Typical Applications

- Home appliances, medical, beauty, massage, adult products
家用电器、医疗、美容、按摩、成人用品
- Flower sprinklers, water dispensers, air conditioning drainage pumps, Medical equipment, Booster technology
花洒、饮水机、空调排水泵、医疗设备、增压技术

外形尺寸

Dimension



产品规格

Product Specifications

额定电压 Rated Voltage	DC 3V	DC 6V	DC 9V	DC 12V	DC 24V
额定电流 Rated Current	≤1200mA	≤600mA	≤400mA	≤300mA	≤150mA
功率 Power	3.6 W	3.6 W	3.6 W	3.6 W	3.6 W
气嘴口径 Air Tap O.D.	Ø6.5mm				
最大水压 Maximum Water Pressure	≥30 psi (200kpa)				
水流量 Water flow	0.3-1.2 LPM				
噪音 Noise Level	≤65db (30cm away)				
寿命测试 Life Test	≥500 hours (连续)				
扬程 Pump Head	≥5m				
吸程 Suction Head	≥5m				
重量 Weight	60g				

* Other parameters: according to customer demand for design/其他参数：根据客户的需求设计。

PYSP370-XE (E款水泵)

水泵
WATER PUMP



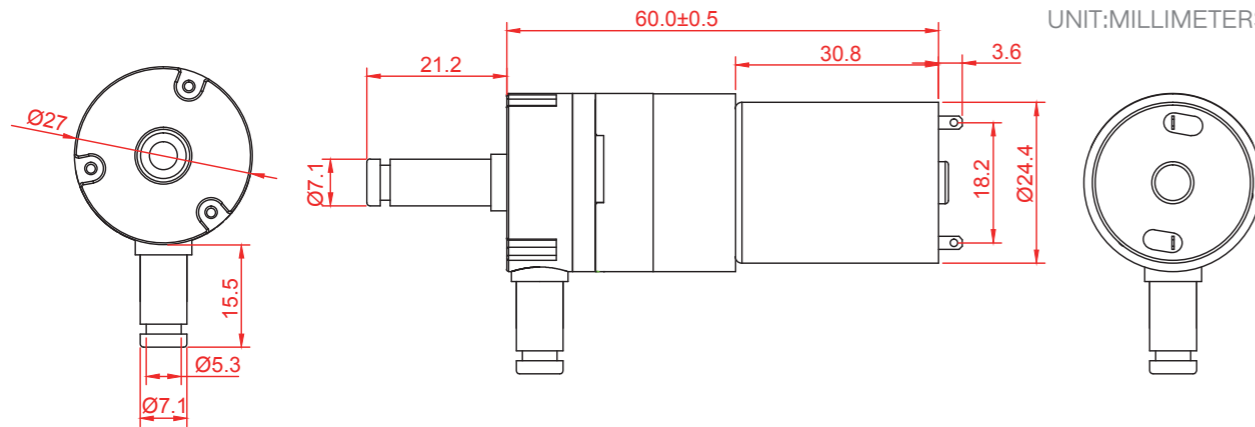
典型应用 Typical Applications

- Home appliances, medical, beauty, massage, adult products
家用电器、医疗、美容、按摩、成人用品
- Flower sprinklers, water dispensers, air conditioning drainage pumps, Medical equipment, Booster technology
花洒、饮水机、空调排水泵、医疗设备、增压技术

外形尺寸

Dimension

WEIGHT:60.0g(APPROX)
UNIT:MILLIMETERS



产品规格

Product Specifications

额定电压 Rated Voltage	DC 3V	DC 6V	DC 9V	DC 12V	DC 24V
额定电流 Rated Current	≤1200mA	≤600mA	≤400mA	≤300mA	≤150mA
功率 Power	3.6 W	3.6 W	3.6 W	3.6 W	3.6 W
气嘴口径 Air Tap O.D.	Ø6.5mm				
最大水压 Maximum Water Pressure	≥30 psi (200kpa)				
水流量 Water flow	0.3-1.2 LPM				
噪音 Noise Level	≤65db (30cm away)				
寿命测试 Life Test	≥500 hours (连续)				
扬程 Pump Head	≥5m				
吸程 Suction Head	≥5m				
重量 Weight	60g				

* Other parameters: according to customer demand for design/其他参数：根据客户的需求设计。

PYSP370-XF (F款水泵)

水泵
WATER PUMP



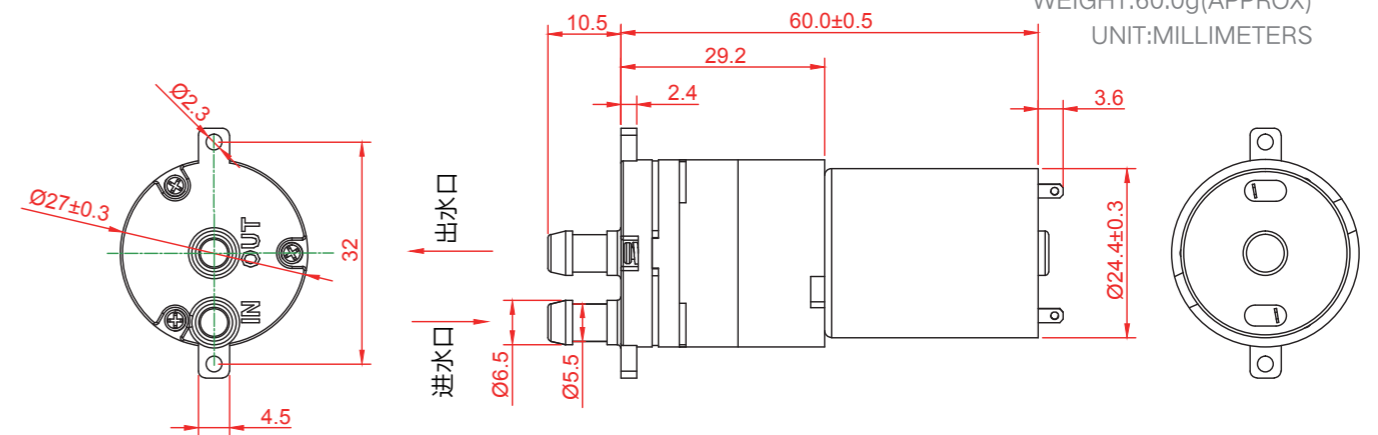
典型应用 Typical Applications

- Home appliances, medical, beauty, massage, adult products
家用电器、医疗、美容、按摩、成人用品
- Flower sprinklers, water dispensers, air conditioning drainage pumps, Medical equipment, Booster technology
花洒、饮水机、空调排水泵、医疗设备、增压技术

外形尺寸

Dimension

WEIGHT:60.0g(APPROX)
UNIT:MILLIMETERS



产品规格

Product Specifications

额定电压 Rated Voltage	DC 3V	DC 6V	DC 9V	DC 12V	DC 24V
额定电流 Rated Current	≤1200mA	≤600mA	≤400mA	≤300mA	≤150mA
功率 Power	3.6 W	3.6 W	3.6 W	3.6 W	3.6 W
气嘴口径 Air Tap O.D.	Ø6.5mm				
最大水压 Maximum Water Pressure	≥30 psi (200kpa)				
水流量 Water flow	0.3-1.0 LPM				
噪音 Noise Level	≤65db (30cm away)				
寿命测试 Life Test	≥500 hours (连续)				
扬程 Pump Head	≥5m				
吸程 Suction Head	≥5m				
重量 Weight	60g				

* Other parameters: according to customer demand for design/其他参数：根据客户的需求设计。

PYSP365-XA (水泵)

水泵
WATER PUMP



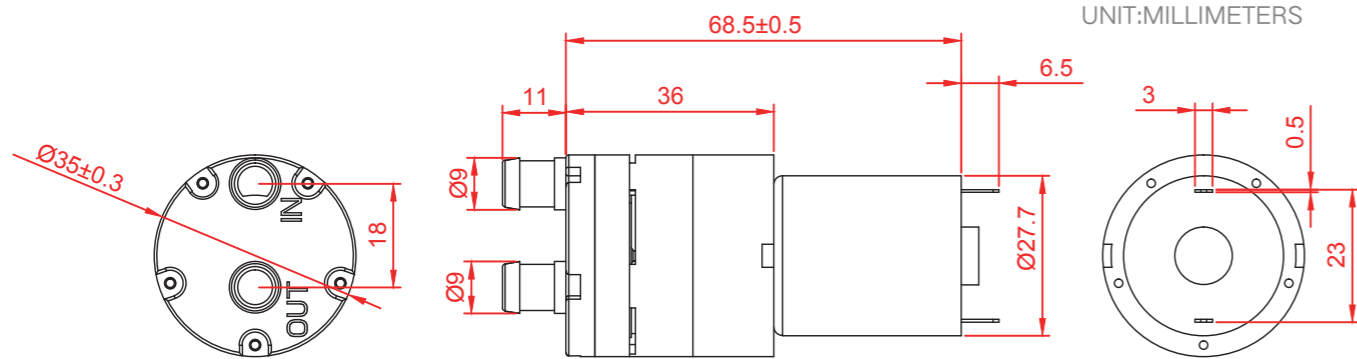
典型应用 Typical Applications

- Home appliances, medical, beauty, massage, adult products
家用电器、医疗、美容、按摩、成人用品
- Flower sprinklers, water dispensers, air conditioning drainage pumps, Medical equipment, Booster technology
花洒、饮水机、空调排水泵、医疗设备、增压技术

外形尺寸

Dimension

WEIGHT:73.0g(APPROX)
UNIT:MILLIMETERS



产品规格

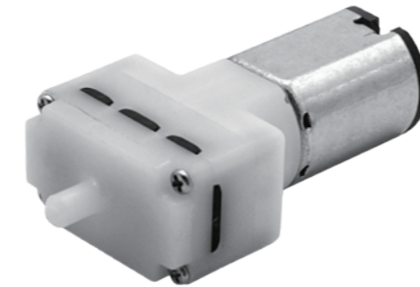
Product Specifications

额定电压 Rated Voltage	DC 6V	DC 12V	DC 24V
额定电流 Rated Current	≤1200mA	≤600mA	≤300mA
功率 Power	7.2 W	7.2 W	7.2 W
气嘴口径 Air Tap O.D.	Ø9.0mm		
最大水压 Maximum Water Pressure	≥5 psi (35kpa)		
水流量 Water flow	1.5-2.2 LPM		
噪音 Noise Level	≤65db (30cm away)		
寿命测试 Life Test	≥ 500 hours (连续)		
扬程 Pump Head	≥2m		
吸程 Suction Head	≥2m		
重量 Weight	73g		

* Other parameters: according to customer demand for design/其他参数：根据客户的需求设计。

PYP032-XA (气泵)

气泵
AIR PUMP



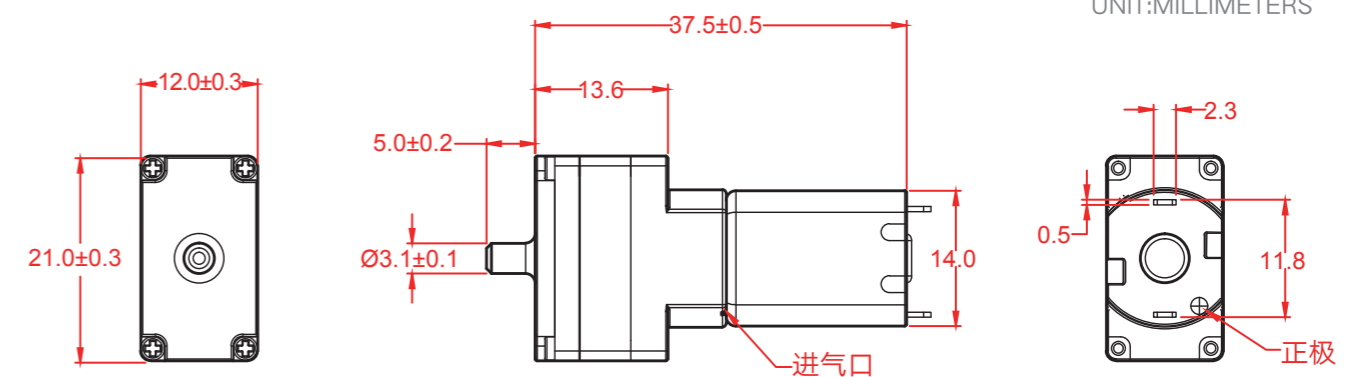
典型应用 Typical Applications

- Home appliances, medical, beauty, massage, adult products
家用电器、医疗、美容、按摩、成人用品
- Sphygmomanometers, Adult products, Massagers, Essential oil machines, Booster technology
血压计、成人用品、按摩器、精油机、增压技术

外形尺寸

Dimension

WEIGHT:14.0g(APPROX)
UNIT:MILLIMETERS



产品规格

Product Specifications

额定电压 Rated Voltage	DC 3V	DC 3.7V	DC 6V	DC 9V
额定电流 Rated Current	≤400mA	≤350mA	≤200mA	≤110mA
功率 Power	1.0 W	1.0 W	1.0 W	1.0 W
气嘴口径 Air Tap O.D.	Ø3.1mm			
最大压力 Maximum Pressure	≥350mmHg			
流量 Air Flow	≥0.7 LPM			
充气时间 Inflation Time	≤8S (From 0 to 300mmHg in a 100cc tank)			
噪音 Noise Level	≤60db (30cm away)			
寿命测试 Life Test	≥ 30,000 Times (ON 10秒, OFF 5秒)			
气密性 Leakage	≤3.0mmHg/min (from 300mmHg in a 100cc tank)			
重量 Weight	14g			

* Other parameters: according to customer demand for design/其他参数：根据客户的需求设计。

PYP030-XA (气泵)

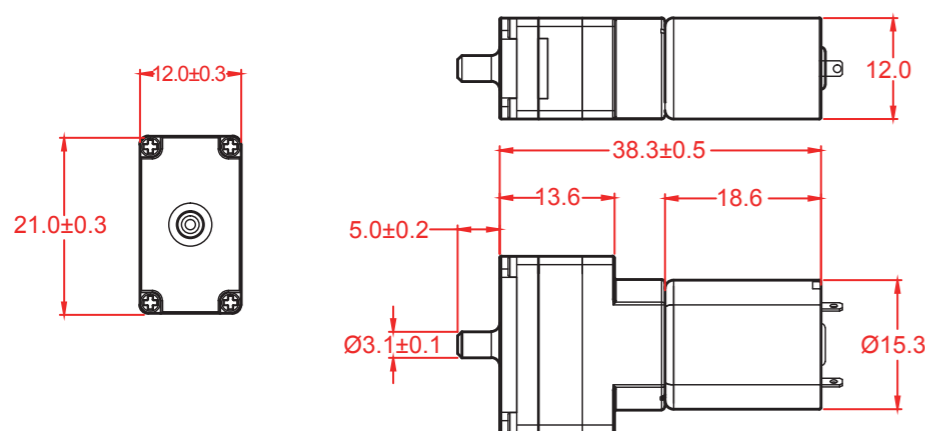
气泵
AIR PUMP



典型应用 Typical Applications

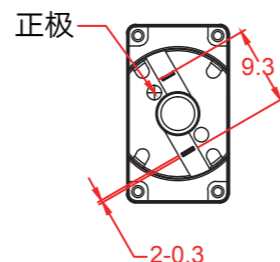
- Home appliances, medical, beauty, massage, adult products
家用电器、医疗、美容、按摩、成人用品
- Sphygmomanometers, Adult products, Massagers, Essential oil machines, Booster technology
血压计、成人用品、按摩器、精油机、增压技术

外形尺寸



Dimension

WEIGHT: 14.0g(APPROX)
UNIT:MILLIMETERS



产品规格

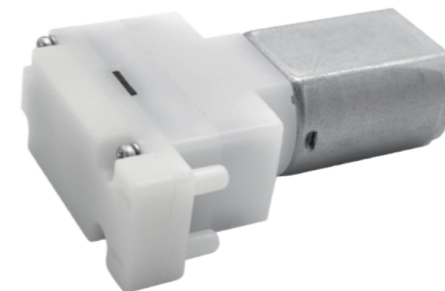
Product Specifications

额定电压 Rated Voltage	DC 3V	DC 3.7V	DC 6V	DC 9V
额定电流 Rated Current	≤400mA	≤350mA	≤200mA	≤110mA
功率 Power	1.0 W	1.0 W	1.0 W	1.0 W
气嘴口径 Air Tap O.D.	Ø3.1mm			
最大压力 Maximum Pressure	≥50KPa (375mmHg)			
流量 Air Flow	0.3-1.0 LPM			
充气时间 Inflation Time	≤8S (From 0 to 300mmHg in a 100cc tank)			
噪音 Noise Level	≤60db (30cm away)			
寿命测试 Life Test	≥ 30,000 Times (ON 10秒, OFF 5秒)			
气密性 Leakage	≤3.0mmHg/min (from 300mmHg in a 100cc tank)			
重量 Weight	14g			

* Other parameters: according to customer demand for design/其他参数：根据客户的需求设计。

PYP130-XA (气泵)

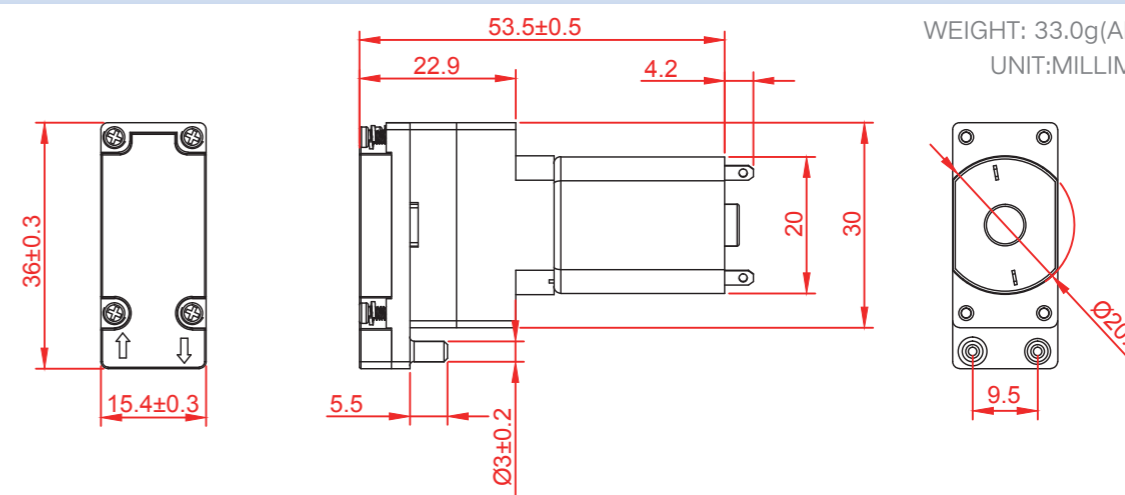
气泵
AIR PUMP



典型应用 Typical Applications

- Home appliances, medical, beauty, massage, adult products
家用电器、医疗、美容、按摩、成人用品
- Sphygmomanometers, Adult products, Massagers, Essential oil machines, Booster technology
血压计、成人用品、按摩器、精油机、增压技术

外形尺寸



Dimension

WEIGHT: 33.0g(APPROX)
UNIT:MILLIMETERS

产品规格

Product Specifications

额定电压 Rated Voltage	DC 3V	DC 6V	DC 9V	DC 12V
额定电流 Rated Current	≤600mA	≤300mA	≤200mA	≤150mA
功率 Power	1.8 W	1.8 W	1.8 W	1.8 W
气嘴口径 Air Tap O.D.	Ø3.0mm			
空气流量 Air Flow (No Load)	0.5-2.0 LPM			
最大压力 Maximum Pressure	≥80KPa(600mmHg)			
噪音 Noise Level	≤65db (30cm away)			
寿命测试 Life Test	≥ 200 hours (连续)			
重量 Weight	33g			

* Other parameters: according to customer demand for design/其他参数：根据客户的需求设计。

PYP310-XA (气泵)

气泵
AIR PUMP



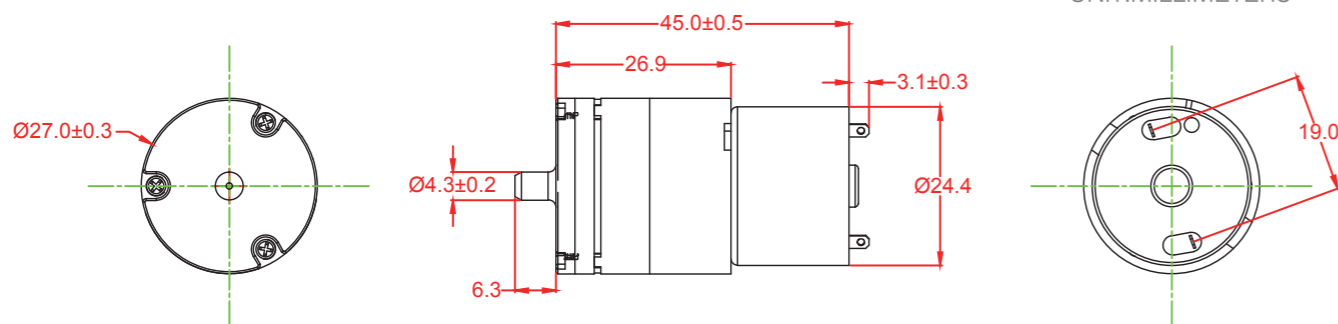
典型应用 Typical Applications

- Home appliances, medical, beauty, massage, adult products
家用电器、医疗、美容、按摩、成人用品
- Sphygmomanometers, Adult products, Massagers, Essential oil machines, Booster technology
血压计、成人用品、按摩器、精油机、增压技术

外形尺寸

Dimension

WEIGHT: 36.0g(APPROX)
UNIT:MILLIMETERS



产品规格

Product Specifications

额定电压 Rated Voltage	DC 3V	DC 6V	DC 9V	DC 12V
额定电流 Rated Current	$\leq 800\text{mA}$	$\leq 400\text{mA}$	$\leq 260\text{mA}$	$\leq 200\text{mA}$
功率 Power	2.4 W	2.4 W	2.4 W	2.4 W
气嘴口径 Air Tap O.D.	$\text{Ø}4.3\text{mm}$			
最大压力 Maximum Pressure	$\geq 60\text{KPa}(450\text{mmHg})$			
流量 Air Flow	0.5-3.0 LPM			
充气时间 Inflation Time	<10s (From 0 to 300mmHg in a 500cc tank)			
噪音 Noise Level	$\leq 60\text{db}$ (30cm away)			
寿命测试 Life Test	$\geq 50,000$ Times (ON 10秒, OFF 5秒)			
气密性 Leakage	< 3.0mmHg/min (from 300mmHg in a 500cc tank)			
重量 Weight	36g			

* Other parameters: according to customer demand for design/其他参数：根据客户的需求设计。

PYP310-XB (出气嘴倒勾)

气泵
AIR PUMP



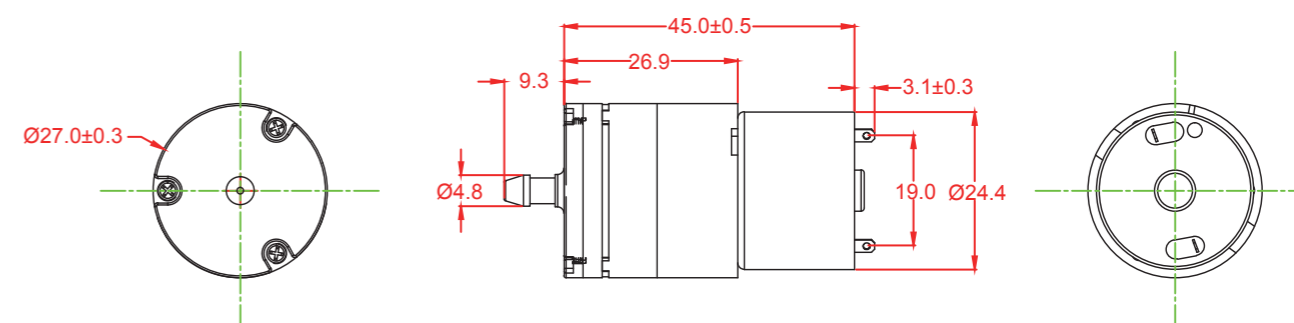
典型应用 Typical Applications

- Home appliances, medical, beauty, massage, adult products
家用电器、医疗、美容、按摩、成人用品
- Sphygmomanometers, Adult products, Massagers, Essential oil machines, Booster technology
血压计、成人用品、按摩器、精油机、增压技术

外形尺寸

Dimension

WEIGHT: 36.0g(APPROX)
UNIT:MILLIMETERS



产品规格

Product Specifications

额定电压 Rated Voltage	DC 3V	DC 6V	DC 9V	DC 12V
额定电流 Rated Current	$\leq 800\text{mA}$	$\leq 400\text{mA}$	$\leq 260\text{mA}$	$\leq 200\text{mA}$
功率 Power	2.4 W	2.4 W	2.4 W	2.4 W
气嘴口径 Air Tap O.D.	$\text{Ø}4.8\text{mm}$			
最大压力 Maximum Pressure	$\geq 400\text{mmHg}$			
流量 Air Flow	0.5-3.0 LPM			
充气时间 Inflation Time	<10s (From 0 to 300mmHg in a 500cc tank)			
噪音 Noise Level	$\leq 60\text{db}$ (30cm away)			
寿命测试 Life Test	$\geq 30,000$ Times (ON 10秒, OFF 5秒)			
气密性 Leakage	< 3.0mmHg/min (from 300mmHg in a 500cc tank)			
重量 Weight	36g			

* Other parameters: according to customer demand for design/其他参数：根据客户的需求设计。

PYP370-XA (气泵)

气泵
AIR PUMP



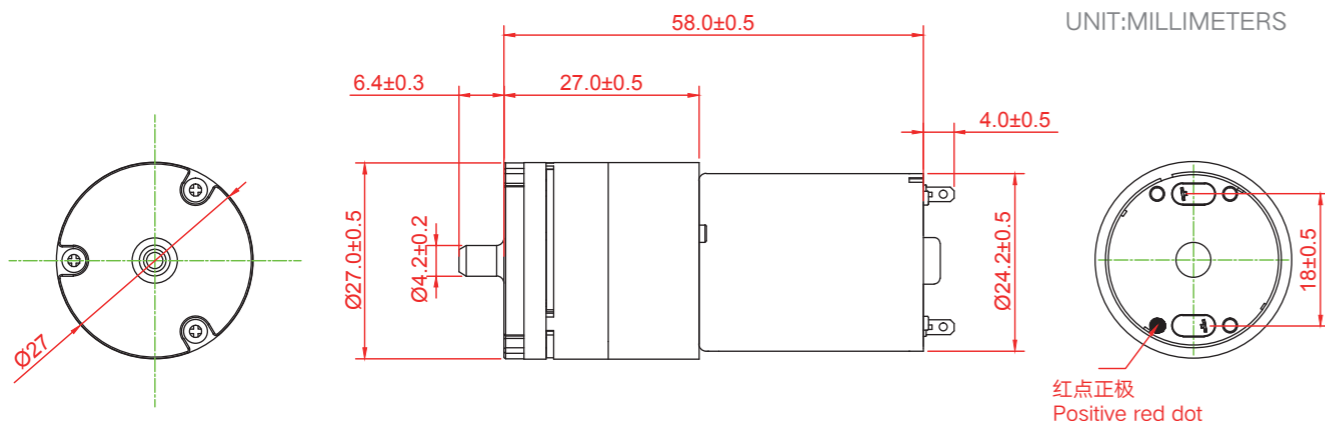
典型应用 Typical Applications

- Home appliances, medical, beauty, massage, adult products
家用电器、医疗、美容、按摩、成人用品
- Sphygmomanometers, Adult products, Massagers, Essential oil machines, Booster technology
血压计、成人用品、按摩器、精油机、增压技术

外形尺寸

Dimension

WEIGHT: 60.0g(APPROX)
UNIT:MILLIMETERS



产品规格

Product Specifications

额定电压 Rated Voltage	DC 3V	DC 6V	DC 9V	DC 12V	DC 24V
额定电流 Rated Current	≤800mA	≤400mA	≤260mA	≤200mA	≤100mA
功率 Power	2.4 W	2.4 W	2.4 W	2.4 W	2.4 W
气嘴口径 Air Tap O.D.	Ø4.2mm				
最大压力 Maximum Pressure	≥60KPa(450mmHg)				
流量 Air Flow	0.5-2.5 LPM				
充气时间 Inflation Time	≤10sec (From 0 to 300mmHg in a 500cc tank)				
噪音 Noise Level	≤60db (30cm away)				
寿命测试 Life Test	≥ 50,000 Times (ON 10秒, OFF 5秒)				
气密性 Leakage	< 3.0mmHg/min (from 300mmHg in a 500cc tank)				
重量 Weight	60g				

* Other parameters: according to customer demand for design/其他参数：根据客户的需求设计。

PYP370-XB (气泵)

气泵
AIR PUMP



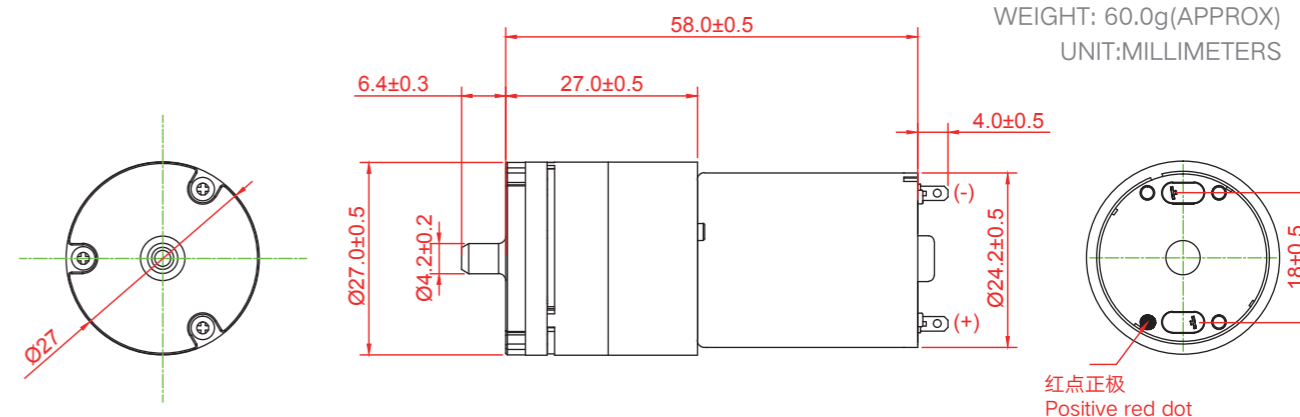
典型应用 Typical Applications

- Home appliances, medical, beauty, massage, adult products
家用电器、医疗、美容、按摩、成人用品
- Sphygmomanometers, Adult products, Massagers, Essential oil machines, Booster technology
血压计、成人用品、按摩器、精油机、增压技术

外形尺寸

Dimension

WEIGHT: 60.0g(APPROX)
UNIT:MILLIMETERS



产品规格

Product Specifications

额定电压 Rated Voltage	DC 3V	DC 6V	DC 9V	DC 12V	DC 24V
额定电流 Rated Current	≤900mA	≤450mA	≤300mA	≤220mA	≤110mA
功率 Power	2.4 W	2.4 W	2.4 W	2.4 W	2.4 W
气嘴口径 Air Tap O.D.	Ø4.2mm				
最大压力 Maximum Pressure	≥100KPa(750mmHg)				
流量 Air Flow	1.0-3.5 LPM				
充气时间 Inflation Time	<10s (From 0 to 300mmHg in a 500cc tank)				
噪音 Noise Level	≤60db (30cm away)				
寿命测试 Life Test	≥ 50,000 Times (ON 10秒, OFF 5秒)				
气密性 Leakage	< 3.0mmHg/min (from 300mmHg in a 500cc tank)				
重量 Weight	60g				

* Other parameters: according to customer demand for design/其他参数：根据客户的需求设计。

PYP370-XC (大倒勾嘴气泵)

气泵
AIR PUMP



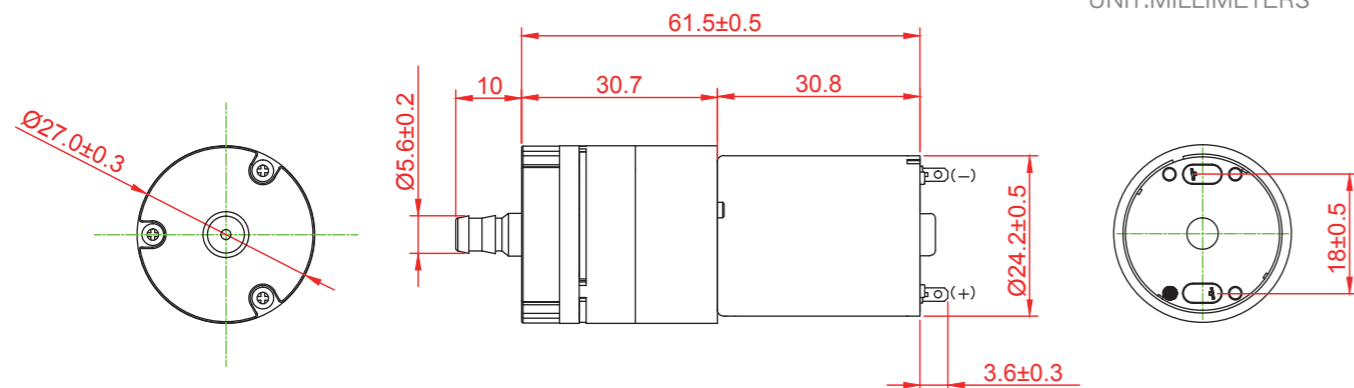
典型应用 Typical Applications

- Home appliances, medical, beauty, massage, adult products
家用电器、医疗、美容、按摩、成人用品
- Sphygmomanometers, Adult products, Massagers, Essential oil machines, Booster technology
血压计、成人用品、按摩器、精油机、增压技术

外形尺寸

Dimension

WEIGHT: 60.0g(APPROX)
UNIT:MILLIMETERS



产品规格

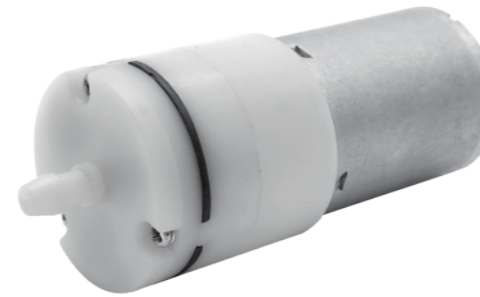
Product Specifications

额定电压 Rated Voltage	DC 3V	DC 6V	DC 9V	DC 12V	DC 24V
额定电流 Rated Current	≤900mA	≤450mA	≤300mA	≤220mA	≤110mA
功率 Power	2.4 W	2.4 W	2.4 W	2.4 W	2.4 W
气嘴口径 Air Tap O.D.	Ø5.6mm				
最大压力 Maximum Pressure	≥60KPa(450mmHg)				
流量 Air Flow	0.5-2.5 LPM				
充气时间 Inflation Time	<10s (From 0 to 300mmHg in a 500cc tank)				
噪音 Noise Level	≤60db (30cm away)				
寿命测试 Life Test	≥ 50,000 Times (ON 10秒, OFF 5秒)				
气密性 Leakage	< 3.0mmHg/min (from 300mmHg in a 500cc tank)				
重量 Weight	60g				

* Other parameters: according to customer demand for design/其他参数：根据客户的需求设计。

PYP370-XD (小倒勾嘴气泵)

气泵
AIR PUMP



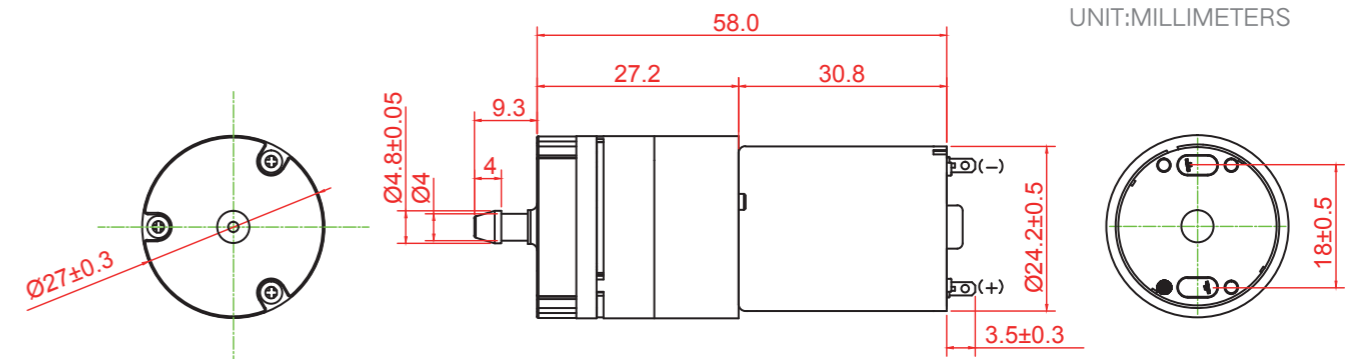
典型应用 Typical Applications

- Home appliances, medical, beauty, massage, adult products
家用电器、医疗、美容、按摩、成人用品
- Sphygmomanometers, Adult products, Massagers, Essential oil machines, Booster technology
血压计、成人用品、按摩器、精油机、增压技术

外形尺寸

Dimension

WEIGHT: 60.0g(APPROX)
UNIT:MILLIMETERS



产品规格

Product Specifications

额定电压 Rated Voltage	DC 3V	DC 6V	DC 9V	DC 12V	DC 24V
额定电流 Rated Current	≤900mA	≤450mA	≤300mA	≤220mA	≤110mA
功率 Power	2.4 W	2.4 W	2.4 W	2.4 W	2.4 W
气嘴口径 Air Tap O.D.	Ø5.6mm				
最大压力 Maximum Pressure	≥60KPa(450mmHg)				
流量 Air Flow	0.5-2.5 LPM				
充气时间 Inflation Time	<10s (From 0 to 300mmHg in a 500cc tank)				
噪音 Noise Level	≤60db (30cm away)				
寿命测试 Life Test	≥ 50,000 Times (ON 10秒, OFF 5秒)				
气密性 Leakage	< 3.0mmHg/min (from 300mmHg in a 500cc tank)				
重量 Weight	60g				

* Other parameters: according to customer demand for design/其他参数：根据客户的需求设计。

PYP520-XA (气泵)

气泵
AIR PUMP



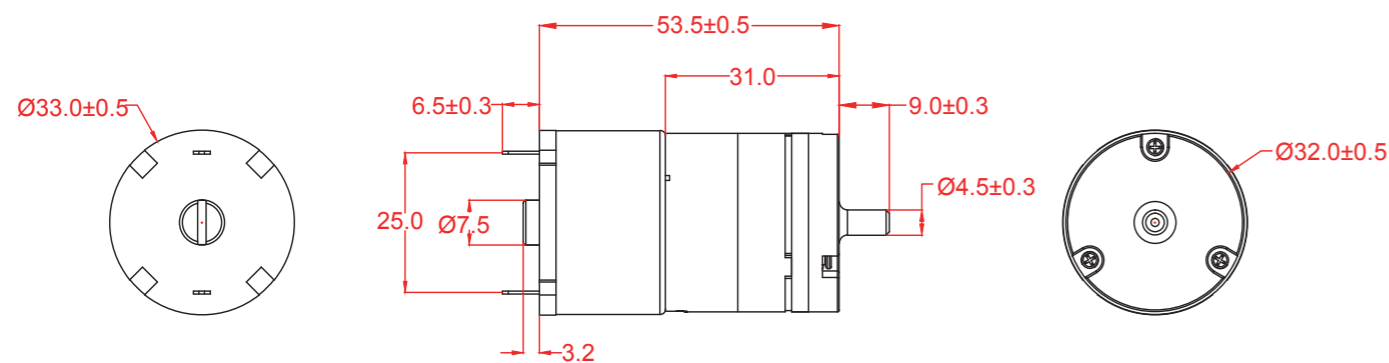
典型应用 Typical Applications

- Home appliances, medical, beauty, massage, adult products
家用电器、医疗、美容、按摩、成人用品
- Water replenishing instrument, Adult products, Massagers, Essential oil machines, Booster technology
美容补水仪、成人用品、按摩器、精油机、增压技术

外形尺寸

Dimension

WEIGHT: 68.0g(APPROX)
UNIT:MILLIMETERS



产品规格

Product Specifications

额定电压 Rated Voltage	DC 3V	DC 6V	DC 9V	DC 12V	DC 24V
额定电流 Rated Current	≤1200mA	≤600mA	≤430mA	≤300mA	≤150mA
功率 Power	3.6 W	3.6 W	3.6 W	3.6 W	3.6 W
气嘴口径 Air Tap O.D.	Ø4.5mm				
真空流量 Vacuum Flow (No Load)	1.5-4.0 LPM				
最大压力 Maximum Pressure	≥80KPa(600mmHg)				
噪音 Noise Level	≤65db (30cm away)				
寿命测试 Life Test	≥ 500 hours (连续)				
重量 Weight	68g				

* Other parameters: according to customer demand for design/其他参数：根据客户的需求设计。

PYP030-XZ (真空泵)

真空泵
VACUUM PUMP



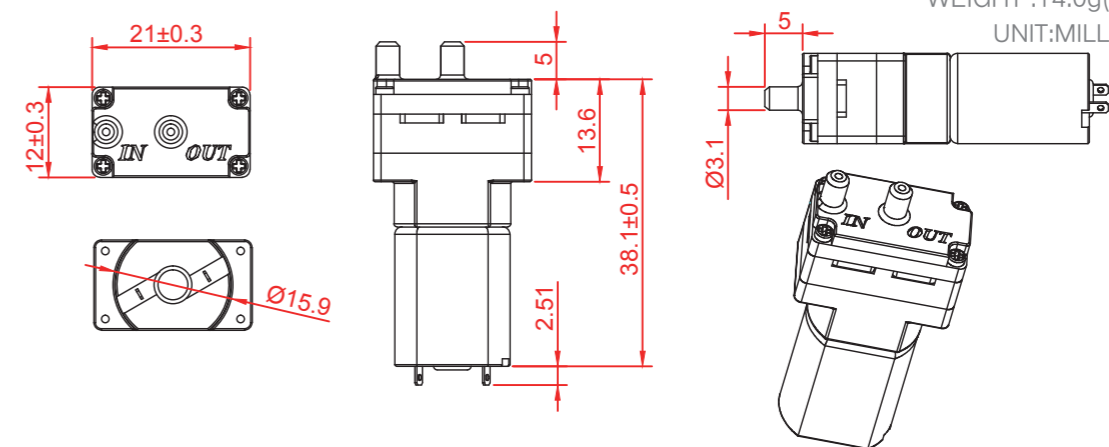
典型应用 Typical Applications

- Home appliances, medical, beauty, massage, adult products
家用电器、医疗、美容、按摩、成人用品
- Guasha instrument, Blackhead instrument, Medical equipment, Vacuum packaging machine, Adult products, Booster technology
刮痧仪、黑头仪、医疗设备、真空包装机、成人用品、增压技术

外形尺寸

Dimension

WEIGHT :14.0g(APPROX)
UNIT:MILLIMETERS



产品规格

Product Specifications

额定电压 Rated Voltage	DC 3V	DC 3.7V	DC 4.5V	DC 6V
额定电流 Rated Current	≤300mA	≤250mA	≤200mA	≤150mA
功率 Power	0.9 W	0.9 W	0.9 W	0.9 W
气嘴口径 Air Tap O.D.	Ø3.1mm			
真空流量 Vacuum Flow (No Load)	0.3-1.5 LPM			
最大真空度 Maximum Vacuum	≤-55 Kpa(-400mmHg)			
噪音 Noise Level	≤65db (30cm away)			
寿命测试 Life Test	≥ 200 hours (连续)			
重量 Weight	14g			

* Other parameters: according to customer demand for design/其他参数：根据客户的需求设计。

PYP130-XZ (Φ19真空泵)

真空泵
VACUUM PUMP



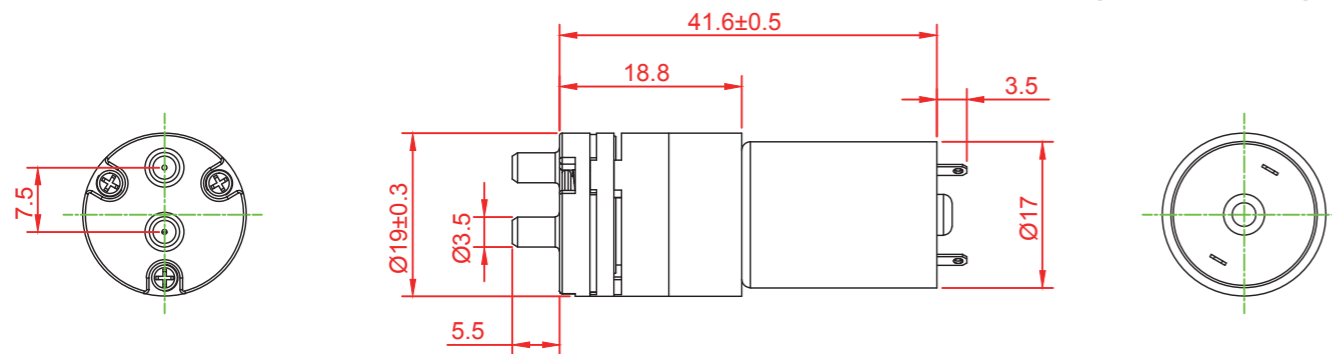
典型应用 Typical Applications

- Home appliances, medical, beauty, massage, adult products
家用电器、医疗、美容、按摩、成人用品
- Guasha instrument, Blackhead instrument, Medical equipment, Vacuum packaging machine, Adult products, Booster technology
刮痧仪、黑头仪、医疗设备、真空包装机、成人用品、增压技术

外形尺寸

Dimension

WEIGHT:25.0g(APPROX)
UNIT:MILLIMETERS



产品规格

Product Specifications

额定电压 Rated Voltage	DC 3V	DC 3.7V	DC 4.5V	DC 6V
额定电流 Rated Current	≤550mA	≤450mA	≤350mA	≤270mA
功率 Power	1.66 W	1.66 W	1.6 W	1.6 W
气嘴口径 Air Tap O.D.	Ø3.5mm			
真空流量 Vacuum Flow (No Load)	0.5-1.0 LPM			
最大压力 Maximum Pressure	≤-58 Kpa(-420mmHg)			
噪音 Noise Level	≤65db (30cm away)			
寿命测试 Life Test	≥ 100 hours (连续)			
重量 Weight	25g			

* Other parameters: according to customer demand for design/其他参数：根据客户的需求设计。

PYP130-XH (Φ21真空泵)

真空泵
VACUUM PUMP



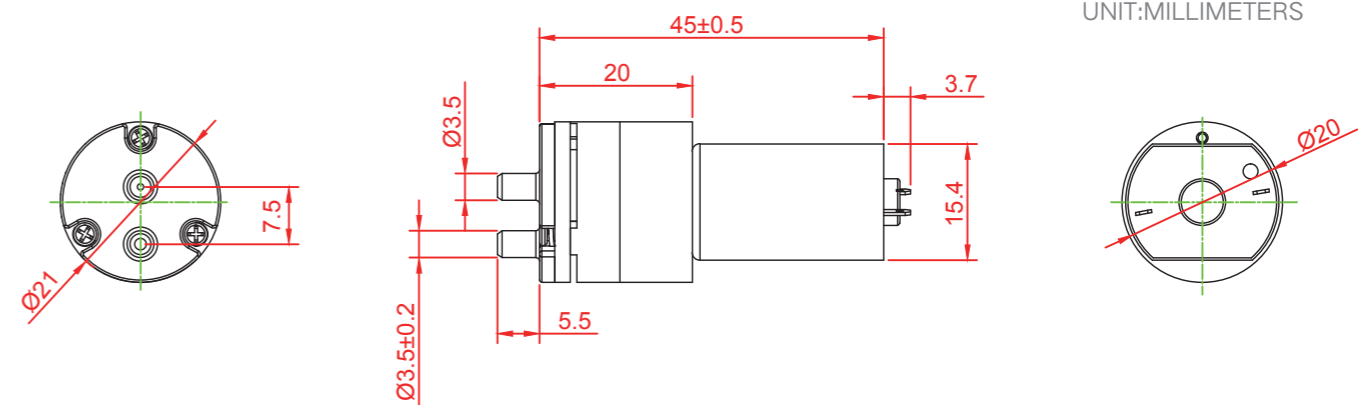
典型应用 Typical Applications

- Home appliances, medical, beauty, massage, adult products
家用电器、医疗、美容、按摩、成人用品
- Guasha instrument, Blackhead instrument, Medical equipment, Vacuum packaging machine, Adult products, Booster technology
刮痧仪、黑头仪、医疗设备、真空包装机、成人用品、增压技术

外形尺寸

Dimension

WEIGHT:28.0g(APPROX)
UNIT:MILLIMETERS



产品规格

Product Specifications

额定电压 Rated Voltage	DC 3V	DC 3.7V	DC 4.5V	DC 6V
额定电流 Rated Current	≤550mA	≤450mA	≤350mA	≤270mA
功率 Power	1.66 W	1.66 W	1.6 W	1.6 W
气嘴口径 Air Tap O.D.	Ø3.5mm			
真空流量 Vacuum Flow (No Load)	0.5-1.5 LPM			
最大真空度 Maximum Vacuum	≤-58 Kpa(-420mmHg)			
噪音 Noise Level	≤65db (30cm away)			
寿命测试 Life Test	≥ 100 hours (连续)			
重量 Weight	28g			

* Other parameters: according to customer demand for design/其他参数：根据客户的需求设计。

PYP310-XZA (A款)

真空泵
VACUUM PUMP

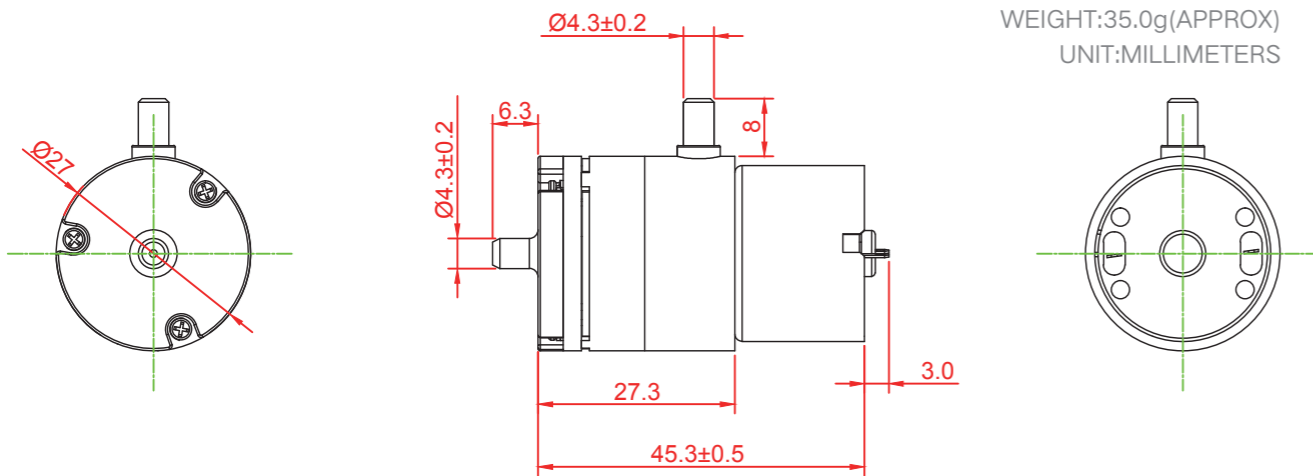


典型应用 Typical Applications

- Home appliances, medical, beauty, massage, adult products
家用电器、医疗、美容、按摩、成人用品
- Guasha instrument, Blackhead instrument, Medical equipment, Breast pump, Adult products, Booster technology
刮痧仪、黑头仪、医疗设备、吸奶器、成人用品、增压技术

外形尺寸

Dimension



产品规格

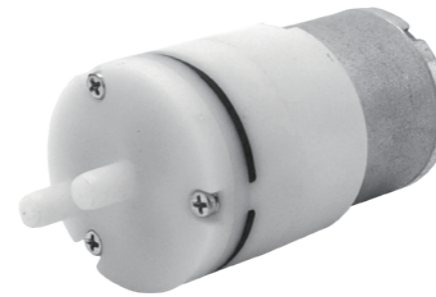
Product Specifications

额定电压 Rated Voltage	DC 3V	DC 6V	DC 9V	DC 12V
额定电流 Rated Current	≤900mA	≤450mA	≤300mA	≤230mA
功率 Power	2.7 W	2.7 W	2.7 W	2.7 W
气嘴口径 Air Tap O.D.	Ø4.3mm			
真空流量 Vacuum Flow (No Load)	1.0-3.5 LPM			
最大压力 Maximum Pressure	≤-60 Kpa(-450mmHg)			
噪音 Noise Level	≤65db (30cm away)			
寿命测试 Life Test	≥ 200 hours (连续)			
重量 Weight	35g			

* Other parameters: according to customer demand for design/其他参数：根据客户的需求设计。

PYP310-XZB (B款)

真空泵
VACUUM PUMP

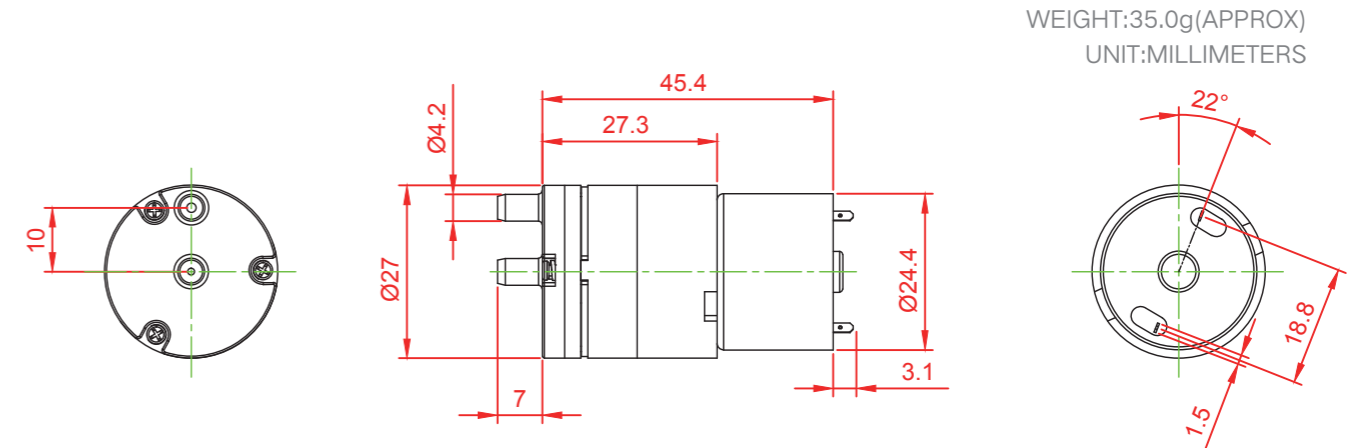


典型应用 Typical Applications

- Home appliances, medical, beauty, massage, adult products
家用电器、医疗、美容、按摩、成人用品
- Guasha instrument, Blackhead instrument, Medical equipment, Breast pump, Adult products, Booster technology
刮痧仪、黑头仪、医疗设备、吸奶器、成人用品、增压技术

外形尺寸

Dimension



产品规格

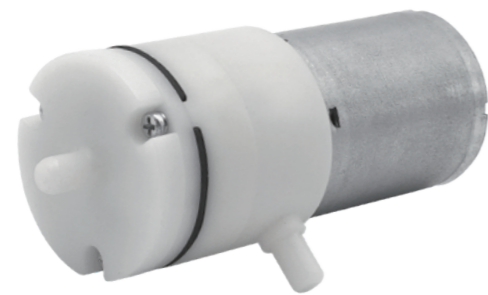
Product Specifications

额定电压 Rated Voltage	DC 3V	DC 6V	DC 9V	DC 12V
额定电流 Rated Current	≤900mA	≤450mA	≤300mA	≤230mA
功率 Power	2.7 W	2.7 W	2.7 W	2.7 W
气嘴口径 Air Tap O.D.	Ø4.0mm			
真空流量 Vacuum Flow (No Load)	1.0-3.5 LPM			
最大真空度 Maximum Vacuum	≤-60 Kpa(-450mmHg)			
噪音 Noise Level	≤65db (30cm away)			
寿命测试 Life Test	≥ 200 hours (连续)			
重量 Weight	35g			

* Other parameters: according to customer demand for design/其他参数：根据客户的需求设计。

PYP370-XZA (A款)

真空泵
VACUUM PUMP



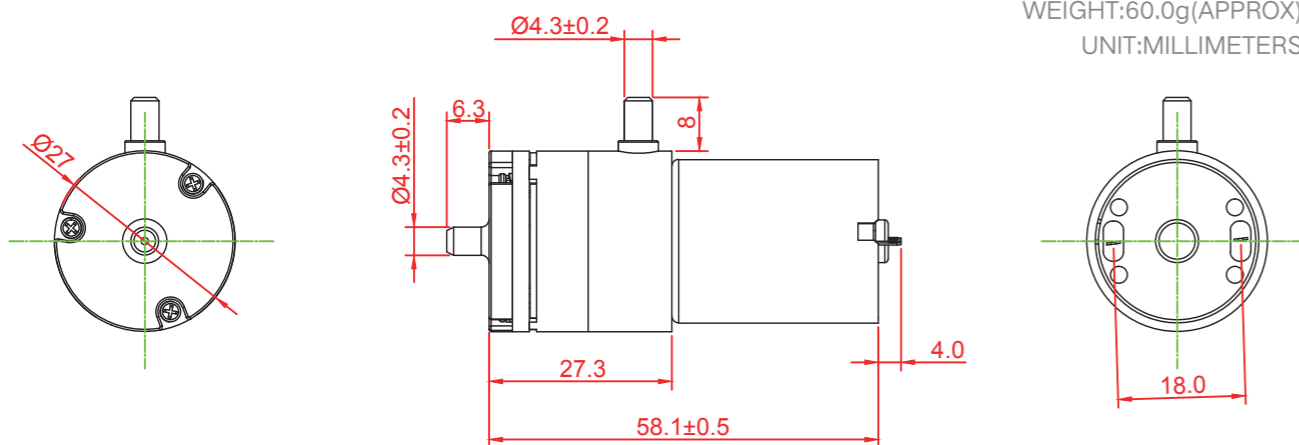
典型应用 Typical Applications

- Home appliances, medical, beauty, massage, adult products
家用电器、医疗、美容、按摩、成人用品
- Guasha instrument, Blackhead instrument, Breast pump, Vacuum packaging machine, Adult products, Booster technology
刮痧仪、黑头仪、吸奶器、真空包装机、成人用品、增压技术

外形尺寸

Dimension

WEIGHT:60.0g(APPROX)
UNIT:MILLIMETERS



产品规格

Product Specifications

额定电压 Rated Voltage	DC 3V	DC 3.7V	DC 4.5V	DC 6V	DC 12V
额定电流 Rated Current	≤600mA	≤500mA	≤400mA	≤300mA	≤150mA
功率 Power	1.8 W	1.8 W	1.8 W	1.8 W	1.8 W
气嘴口径 Air Tap O.D.	Ø4.2mm				
真空流量 Vacuum Flow (No Load)	1.0-3.5 LPM				
最大压力 Maximum Pressure	≤-60 Kpa(-450mmHg)				
噪音 Noise Level	≤65db (30cm away)				
寿命测试 Life Test	≥ 500 hours (连续)				
重量 Weight	60g				

* Other parameters: according to customer demand for design/其他参数：根据客户的需求设计。

PYP370-XZB (B款)

真空泵
VACUUM PUMP



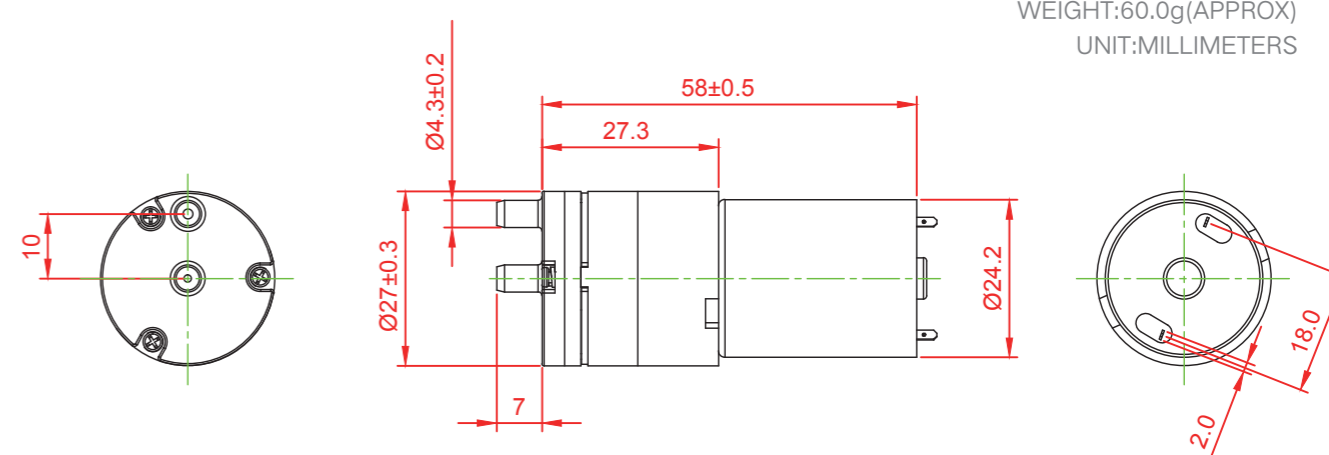
典型应用 Typical Applications

- Home appliances, medical, beauty, massage, adult products
家用电器、医疗、美容、按摩、成人用品
- Guasha instrument, Blackhead instrument, Medical equipment, Vacuum packaging machine, Adult products, Booster technology
刮痧仪、黑头仪、医疗设备、真空包装机、成人用品、增压技术

外形尺寸

Dimension

WEIGHT:60.0g(APPROX)
UNIT:MILLIMETERS



产品规格

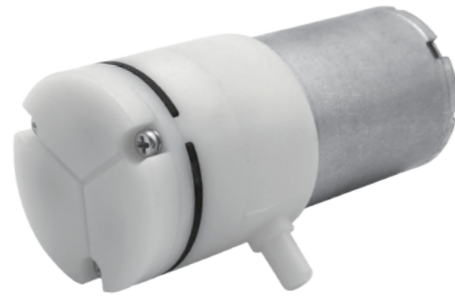
Product Specifications

额定电压 Rated Voltage	DC 3V	DC 3.7V	DC 4.5V	DC 6V	DC 12V
额定电流 Rated Current	≤500mA	≤400mA	≤330mA	≤250mA	≤125mA
功率 Power	1.5 W	1.5 W	1.5 W	1.5 W	1.5 W
气嘴口径 Air Tap O.D.	Ø4.0mm				
真空流量 Vacuum Flow (No Load)	≥3.0 LPM				
最大真空度 Maximum Vacuum	≤-60 Kpa(-450mmHg)				
噪音 Noise Level	≤65db (30cm away)				
寿命测试 Life Test	≥ 500 hours (连续)				
重量 Weight	60g				

* Other parameters: according to customer demand for design/其他参数：根据客户的需求设计。

PYP370-XZC (平头C款)

真空泵
VACUUM PUMP



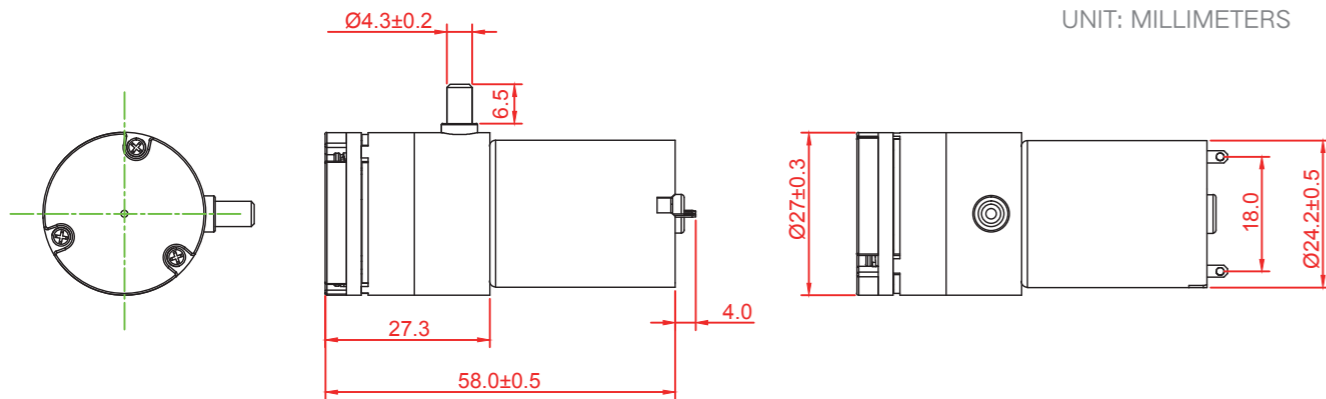
典型应用 Typical Applications

- Home appliances, medical, beauty, massage, adult products
家用电器、医疗、美容、按摩、成人用品
- Guasha instrument, Blackhead instrument, Breast pump, Vacuum packaging machine, Adult products, Booster technology
刮痧仪、黑头仪、吸奶器、真空包装机、成人用品、增压技术

外形尺寸

Dimension

WEIGHT: 60.0g(APPROX)
UNIT: MILLIMETERS



产品规格

Product Specifications

额定电压 Rated Voltage	DC 3V	DC 3.7V	DC 4.5V	DC 6V	DC 12V
额定电流 Rated Current	≤600mA	≤500mA	≤400mA	≤300mA	≤150mA
功率 Power	1.8 W	1.8 W	1.8 W	1.8 W	1.8 W
气嘴口径 Air Tap O.D.	Ø4.3mm				
真空流量 Vacuum Flow (No Load)	1.0-3.5 LPM				
最大压力 Maximum Pressure	≤-60 Kpa(-450mmHg)				
噪音 Noise Level	≤65db (30cm away)				
寿命测试 Life Test	≥ 500 hours (连续)				
重量 Weight	60g				

* Other parameters: according to customer demand for design/其他参数：根据客户的需求设计。

PYP520-XZ (真空泵)

真空泵
VACUUM PUMP



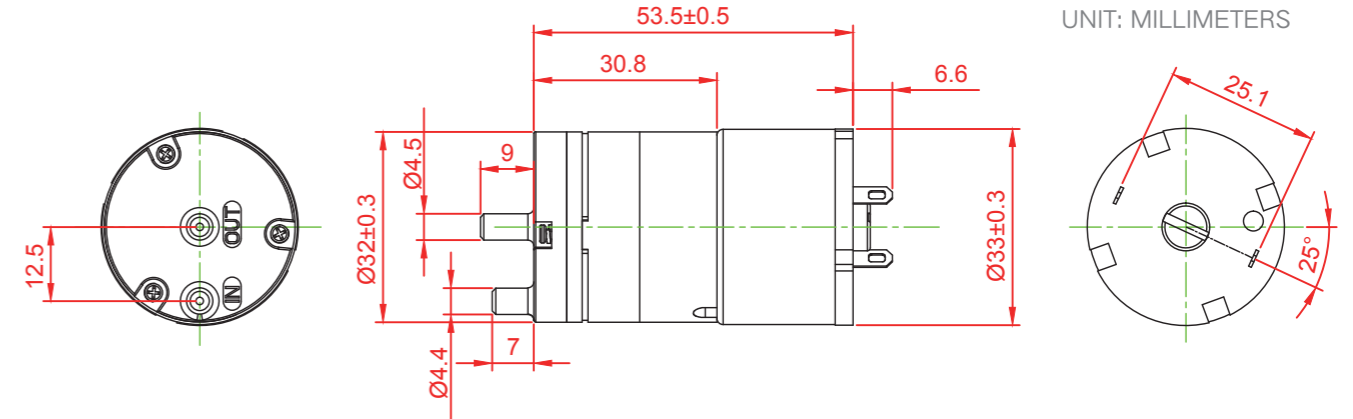
典型应用 Typical Applications

- Home appliances, medical, beauty, massage, adult products
家用电器、医疗、美容、按摩、成人用品
- Medical equipment, Vacuum packaging machine, Booster technology
医疗设备、真空包装机、增压技术

外形尺寸

Dimension

WEIGHT: 67.0g(APPROX)
UNIT: MILLIMETERS



产品规格

Product Specifications

额定电压 Rated Voltage	DC 3.7V	DC 4.5V	DC 6V	DC 12V	DC 24V
额定电流 Rated Current	≤800mA	≤660mA	≤500mA	≤250mA	≤125mA
功率 Power	3.0 W	3.0 W	3.0 W	3.0 W	3.0 W
气嘴口径 Air Tap O.D.	Ø4.5mm				
真空流量 Vacuum Flow (No Load)	1.5-4.5 LPM				
最大真空度 Maximum Vacuum	≤-60 Kpa(-450mmHg)				
噪音 Noise Level	≤65db (30cm away)				
寿命测试 Life Test	≥ 500 hours (连续)				
重量 Weight	67g				

* Other parameters: according to customer demand for design/其他参数：根据客户的需求设计。

PYP528-XA (A款真空泵/气泵)

真空泵
VACUUM PUMP



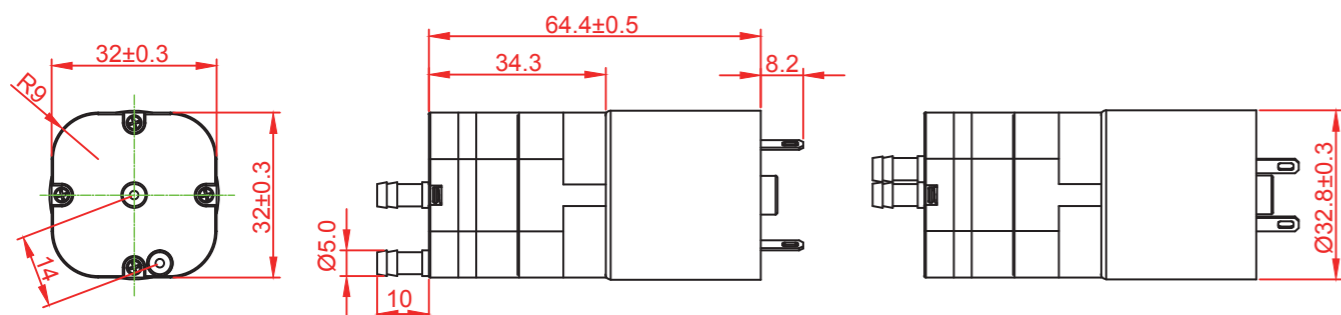
典型应用 Typical Applications

- Home appliances, medical, beauty, massage, adult products
家用电器、医疗、美容、按摩、成人用品
- Medical equipment, Vacuum packaging machine, Massagers, Water replenishing instrument, Booster technology
医疗设备、真空包装机、按摩器、美容补水仪、增压技术

外形尺寸

Dimension

WEIGHT: 98.0g(APPROX)
UNIT: MILLIMETERS



产品规格

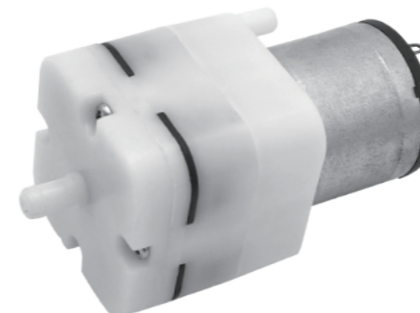
Product Specifications

额定电压 Rated Voltage	DC 3.7V	DC 4.5V	DC 6V	DC 12V	DC 24V
额定电流 Rated Current	≤1600mA	≤1300mA	≤1000mA	≤500mA	≤250mA
功率 Power	6.0 W	6.0 W	6.0 W	6.0 W	6.0 W
气嘴口径 Air Tap O.D.	Ø5.0mm				
真空流量 Vacuum Flow (No Load)	2.5-8.0 LPM				
最大真空度 Maximum Vacuum	≤-60 Kpa(-450mmHg)				
最大正压 Maximum Pressure	≥100 Kpa(750mmHg)				
噪音 Noise Level	≤65db (30cm away)				
寿命测试 Life Test	≥ 500 hours (连续)				
重量 Weight	98g				

* Other parameters: according to customer demand for design/其他参数：根据客户的需求设计。

PYP528-XB (B款气泵/真空泵)

气泵
AIR PUMP



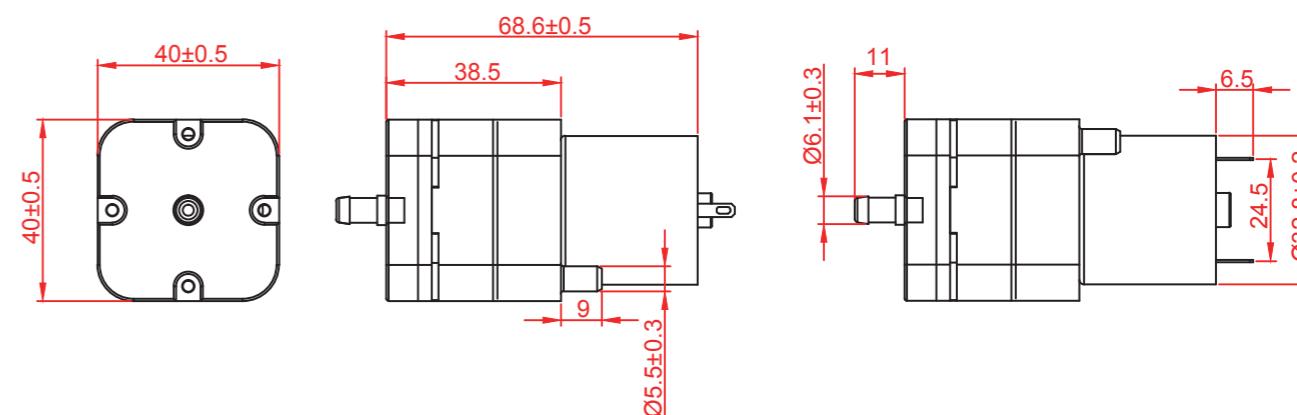
典型应用 Typical Applications

- Home appliances, medical, beauty, massage, adult products
家用电器、医疗、美容、按摩、成人用品
- Medical equipment, Vacuum packaging machine, Massagers, Booster technology
医疗设备、真空包装机、按摩器、增压技术

外形尺寸

Dimension

WEIGHT: 120.0g(APPROX)
UNIT: MILLIMETERS



产品规格

Product Specifications

额定电压 Rated Voltage	DC 3.7V	DC 4.5V	DC 6V	DC 12V	DC 24V
额定电流 Rated Current	≤2000mA	≤1600mA	≤1200mA	≤600mA	≤300mA
功率 Power	7.2 W	7.2 W	7.2 W	7.2 W	7.2 W
气嘴口径 Air Tap O.D.	Ø6.1mm				
真空流量 Vacuum Flow (No Load)	5.0-10.0 LPM				
最大真空度 Maximum Vacuum	≤-55 Kpa(-412mmHg)				
最大正压 Maximum Pressure	≥80 Kpa(600mmHg)				
噪音 Noise Level	≤65db (30cm away)				
寿命测试 Life Test	≥ 500 hours (连续)				
重量 Weight	120g				

* Other parameters: according to customer demand for design/其他参数：根据客户的需求设计。

PYP555-XA (A款气泵/真空泵)

气泵
AIR PUMP



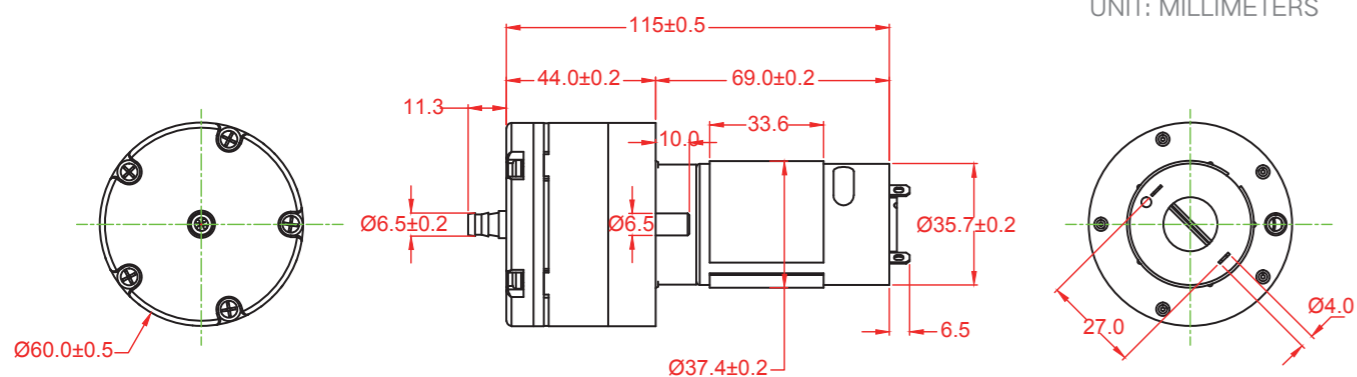
典型应用 Typical Applications

- Home appliances, medical, beauty, massage, adult products
家用电器、医疗、美容、按摩、成人用品
- Medical equipment, Vacuum packaging machine, Massagers, Booster technology
医疗设备、真空包装机、按摩器、增压技术

外形尺寸

Dimension

WEIGHT: 285.0g(APPROX)
UNIT: MILLIMETERS



产品规格

Product Specifications

额定电压 Rated Voltage	DC 6V	DC 9V	DC 12V	DC 24V
额定电流 Rated Current	≤2000mA	≤1300mA	≤1000mA	≤500mA
功率 Power	12 W	7.2 W	12 W	12 W
气嘴口径 Air Tap O.D.	Ø7.0mm			
真空流量 Vacuum Flow (No Load)	10-15 LPM			
最大真空度 Maximum Vacuum	≤-58 Kpa(-435mmHg)			
最大正压 Maximum Pressure	≥100 Kpa(750mmHg)			
噪音 Noise Level	≤65db (30cm away)			
寿命测试 Life Test	≥ 500 hours (连续)			
重量 Weight	285g			

* Other parameters: according to customer demand for design/其他参数：根据客户的需求设计。

PYP555-XB (B款气泵/真空泵)

气泵
AIR PUMP



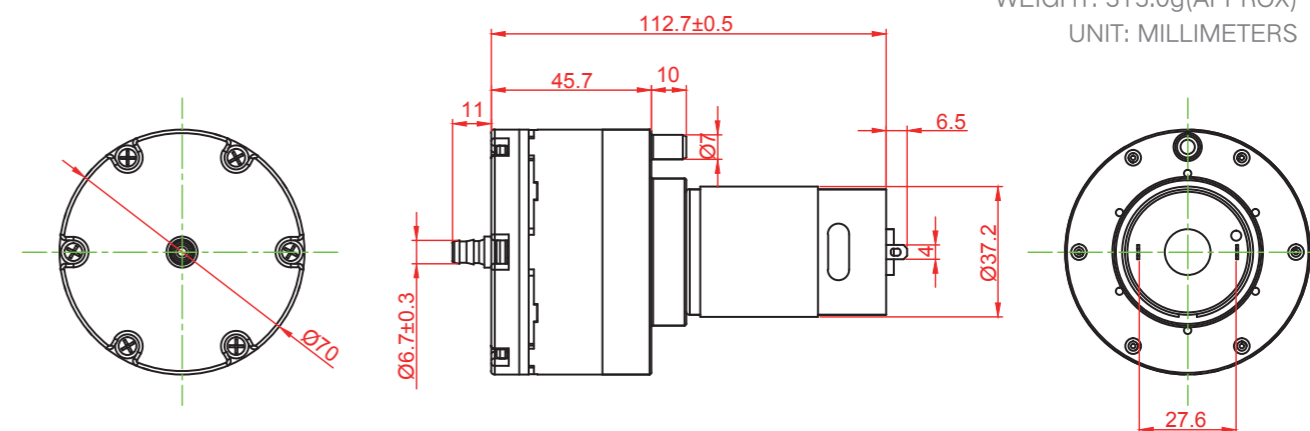
典型应用 Typical Applications

- Home appliances, medical, beauty, massage, adult products
家用电器、医疗、美容、按摩、成人用品
- Medical equipment, Vacuum packaging machine, Massagers, Booster technology
医疗设备、真空包装机、按摩器、增压技术

外形尺寸

Dimension

WEIGHT: 315.0g(APPROX)
UNIT: MILLIMETERS



产品规格

Product Specifications

额定电压 Rated Voltage	DC 12V	DC 24V
额定电流 Rated Current	≤1500mA	≤750mA
功率 Power	18 W	18 W
气嘴口径 Air Tap O.D.	Ø6.7mm	
真空流量 Vacuum Flow (No Load)	20-25 LPM	
最大真空度 Maximum Vacuum	≤-50 Kpa(-375mmHg)	
最大正压 Maximum Pressure	≥80 Kpa(600mmHg)	
噪音 Noise Level	≤65db (30cm away)	
寿命测试 Life Test	≥ 500 hours (连续)	
重量 Weight	315g	

* Other parameters: according to customer demand for design/其他参数：根据客户的需求设计。

PYP395-XZ (真空活塞泵)

真空泵
VACUUM PUMP

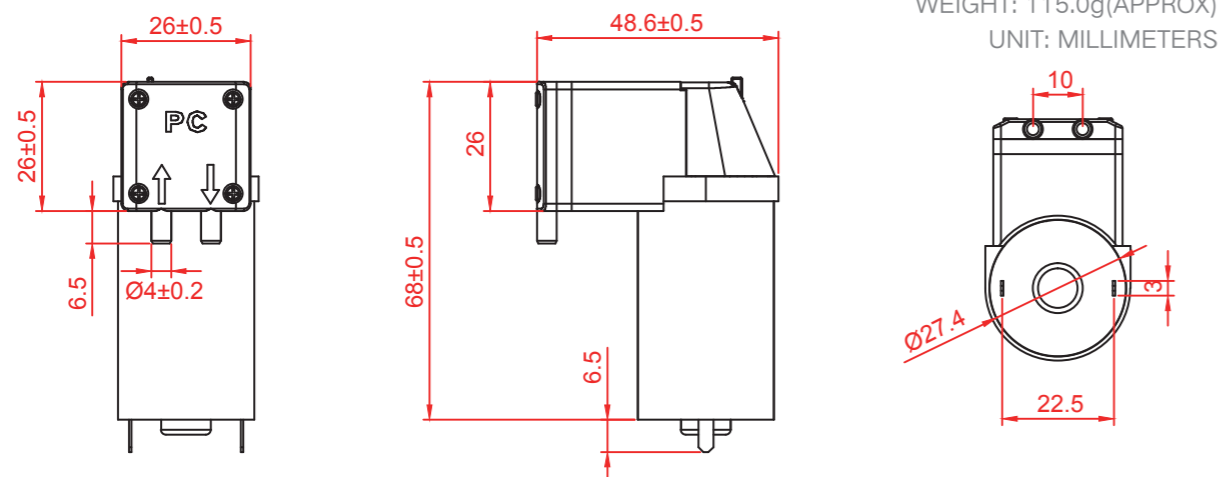


典型应用 Typical Applications

- Home appliances, medical, beauty, massage, adult products
家用电器、医疗、美容、按摩、成人用品
- Medical equipment, Vacuum packaging machine, Massagers, Water replenishing instrument, Booster technology
医疗设备、真空包装机、按摩器、美容补水仪、增压技术

外形尺寸

Dimension



产品规格

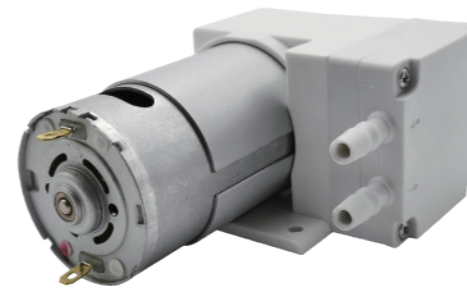
Product Specifications

额定电压 Rated Voltage	DC 6V	DC 9V	DC 12V	DC 24V
额定电流 Rated Current	≤1000mA	≤660mA	≤500mA	≤250mA
功率 Power	6.0 W	6.0 W	6.0 W	6.0 W
气嘴口径 Air Tap O.D.	Ø4.0mm			
真空流量 Vacuum Flow (No Load)	≥5.5 LPM			
最大真空度 Maximum Vacuum	≤-70 Kpa(-525mmHg)			
噪音 Noise Level	≤75db (30cm away)			
寿命测试 Life Test	≥ 500 hours (连续)			
重量 Weight	115g			

* Other parameters: according to customer demand for design/其他参数：根据客户的需求设计。

PYP555-XZ (真空泵)

真空泵
VACUUM PUMP

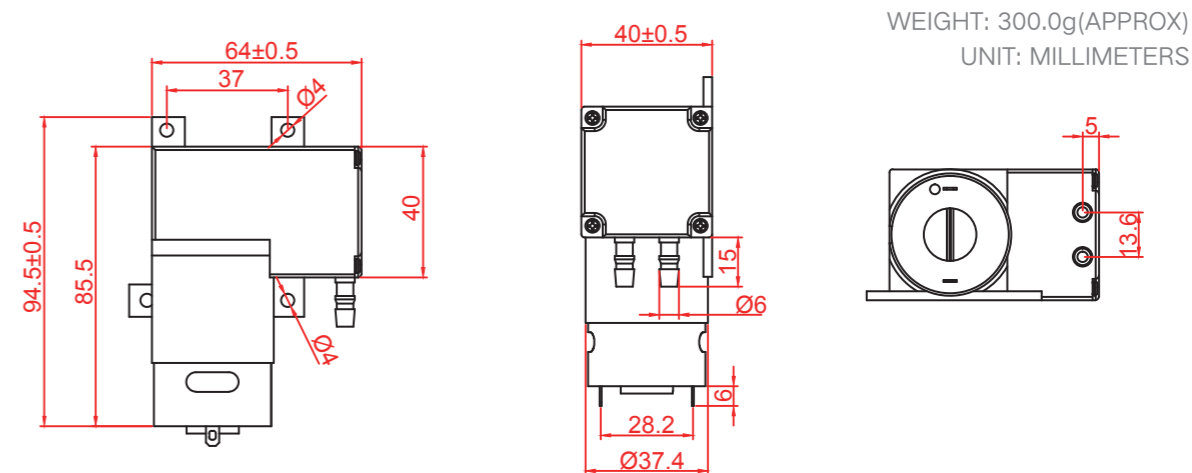


典型应用 Typical Applications

- Home appliances, medical, beauty, massage, adult products
家用电器、医疗、美容、按摩、成人用品
- Medical equipment, Vacuum packaging machine, Massagers, Booster technology
医疗设备、真空包装机、按摩器、增压技术

外形尺寸

Dimension



产品规格

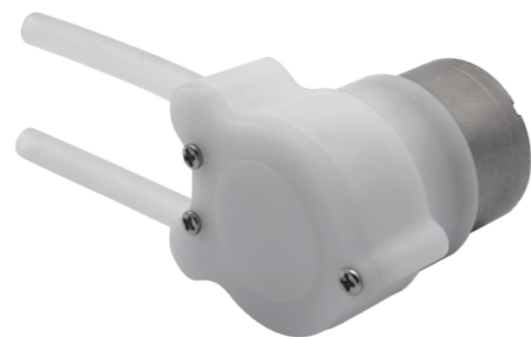
Product Specifications

额定电压 Rated Voltage	DC 9V	DC 12V	DC 24V
额定电流 Rated Current	≤1300mA	≤1000mA	≤500mA
功率 Power	12 W	12 W	12 W
气嘴口径 Air Tap O.D.	Ø6.0mm		
真空流量 Vacuum Flow (No Load)	8-12 LPM		
最大真空度 Maximum Vacuum	≤-70 Kpa(-525mmHg)		
噪音 Noise Level	≤75db (30cm away)		
寿命测试 Life Test	≥ 500 hours (连续)		
重量 Weight	300g		

* Other parameters: according to customer demand for design/其他参数：根据客户的需求设计。

PYRP310-XA (蠕动泵)

液泵
LIQUID PUMP



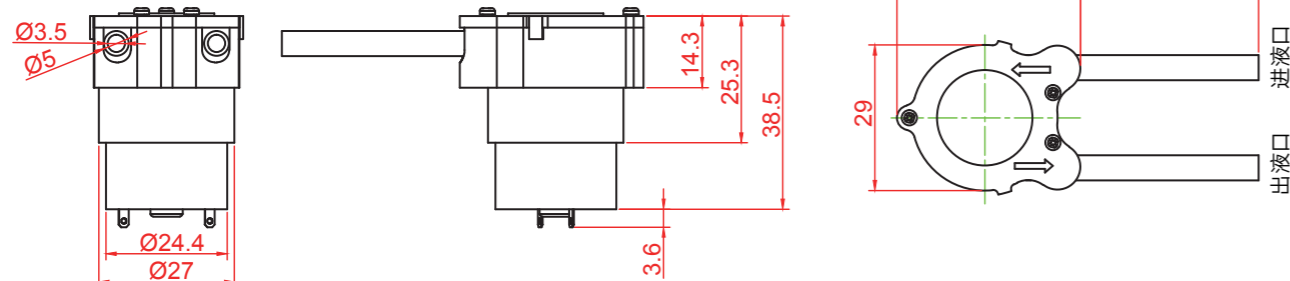
典型应用 Typical Applications

- Home appliances, medical, beauty, massage, adult products
家用电器、医疗、美容、按摩、成人用品
- Hand sanitizer foaming machine
洗手液发泡机

外形尺寸

Dimension

WEIGHT: 42.0g(APPROX)
UNIT: MILLIMETERS



产品规格

Product Specifications

额定电压 Rated Voltage	DC 3V	DC 3.7V	DC 4.5V	DC 6V
额定电流 Rated Current	≤1000mA	≤810mA	≤660mA	≤500mA
功率 Power	3.0 W	3.0 W	3.0 W	3.0 W
气嘴口径 Air Tap O.D.	Ø5.0mm			
抽液量 Water flow	50-200 mLPM			
最大真空度 Maximum Vacuum	≤-20 Kpa(-150mmHg)			
噪音 Noise Level	≤65db (30cm away)			
寿命测试 Life Test	≥ 100,000 Times (ON 2秒, OFF 2秒)			
扬程 Pump Head	≥0.5m			
吸程 Suction Head	≥0.5m			
重量 Weight	42g			

* Other parameters: according to customer demand for design/其他参数：根据客户的需求设计。

PYRP500-XA (蠕动泵)

液泵
LIQUID PUMP



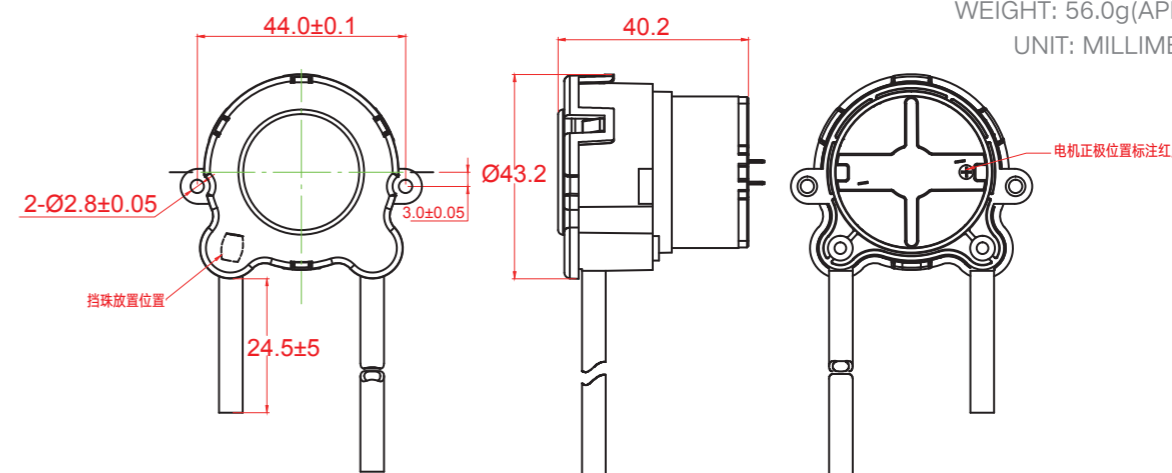
典型应用 Typical Applications

- Home appliances, medical, beauty, massage, adult products
家用电器、医疗、美容、按摩、成人用品
- Hand sanitizer foaming machine
洗手液发泡机

外形尺寸

Dimension

WEIGHT: 56.0g(APPROX)
UNIT: MILLIMETERS



产品规格

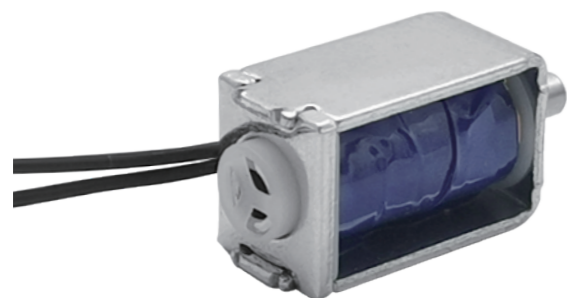
Product Specifications

额定电压 Rated Voltage	DC 3V	DC 3.7V	DC 4.5V	DC 6V	DC 12V
额定电流 Rated Current	≤800mA	≤650mA	≤530mA	≤400mA	≤200mA
功率 Power	2.4 W	2.4 W	2.4 W	2.4 W	2.4 W
气嘴口径 Air Tap O.D.	Ø5.0mm				
抽液量 Water flow	100-300 mLPM				
最大真空度 Maximum Vacuum	≤-20 Kpa(-150mmHg)				
噪音 Noise Level	≤65db (30cm away)				
寿命测试 Life Test	≥ 100,000 Times (ON 2秒, OFF 2秒)				
扬程 Pump Head	≥0.5m				
吸程 Suction Head	≥0.5m				
重量 Weight	56g				

* Other parameters: according to customer demand for design/其他参数：根据客户的需求设计。

PYF1-XA (一位一通常开阀)

腕式电磁阀
WRIST VALVE



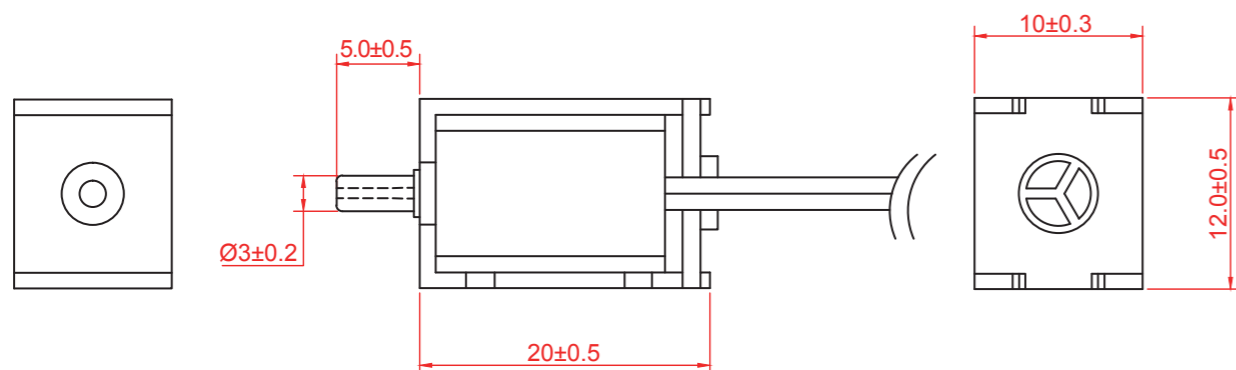
典型应用 Typical Applications

- Home appliances, medical, beauty, massage, adult products
家用电器、医疗、美容、按摩、成人用品
- Sphygmomanometers, Adult products, Massagers, Essential oil machines, Booster technology
血压计、成人用品、按摩器、精油机、增压技术

外形尺寸

Dimension

WEIGHT: 10.0g(APPROX)
UNIT: MILLIMETERS



产品规格

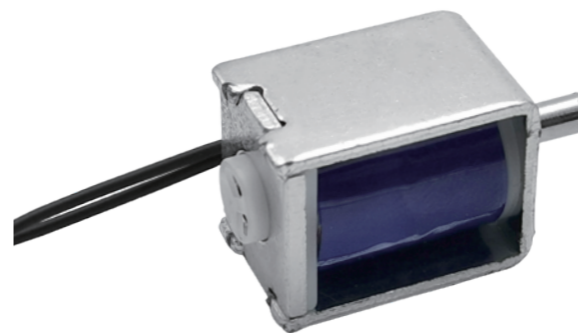
Product Specifications

额定电压 Rated Voltage	DC 3V	DC 3.7V	DC 6V	DC 12V
额定电流 Rated Current	75 ± 10%mA	67 ± 10%mA	60 ± 10%mA	60 ± 10%mA
直流阻抗 DC Resistance	40 ± 10%Ω	55 ± 10%Ω	100 ± 10%Ω	200 ± 10%Ω
功率 Power	0.22 W	0.25 W	0.36 W	0.72 W
气嘴口径 Air Tap O.D.	Ø3.0mm			
最大压力 Maximum Pressure	40KPa(300mmHg)			
媒介 Medium	Air			
排气速度 Exhaust Speed	< 4sec (from 300 to 15 mmHg in a 100cc tank)			
寿命测试 Life Test	≥ 200,000 Times (ON 5秒, OFF 5秒)			
气密性 Leakage	<3mmHg/min (under 300 mmHg in a 100cc tank)			
使用温度 Operation Temperature	0 ~50°C 30% to 85%RH			
模式 Type	Normally Opened			
重量 Weight	10g			

* Other parameters: according to customer demand for design/其他参数: 根据客户的需求设计.

PYF1-XB (一位一通常开阀)

腕式电磁阀
WRIST VALVE



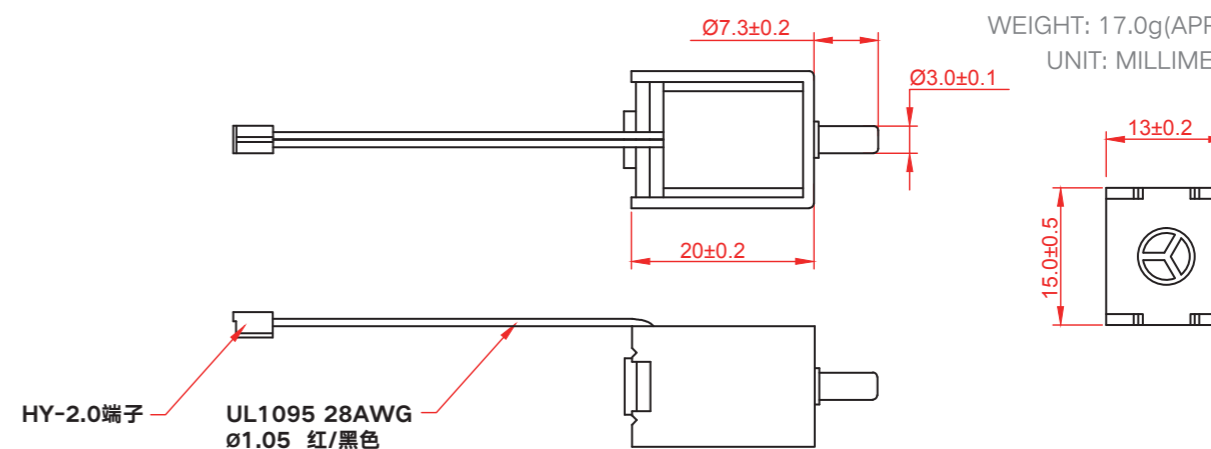
典型应用 Typical Applications

- Home appliances, medical, beauty, massage, adult products
家用电器、医疗、美容、按摩、成人用品
- Sphygmomanometers, Adult products, Massagers, Essential oil machines, Booster technology
血压计、成人用品、按摩器、精油机、增压技术

外形尺寸

Dimension

WEIGHT: 17.0g(APPROX)
UNIT: MILLIMETERS



产品规格

Product Specifications

额定电压 Rated Voltage	DC 3V	DC 3.7V	DC 6V	DC 9.0V	DC 12.0V
额定电流 Rated Current	66 ± 10%mA	60 ± 10%mA	60 ± 10%mA	40 ± 10%mA	45 ± 10%mA
直流阻抗 DC Resistance	45 ± 10%Ω	60 ± 10%Ω	100 ± 10%Ω	225 ± 10%Ω	270 ± 10%Ω
功率 Power	0.20 W	0.22 W	0.36 W	0.36 W	0.54 W
气嘴口径 Air Tap O.D.	Ø3.0mm				
最大压力 Maximum Pressure	40KPa(300mmHg)				
媒介 Medium	Air				
排气速度 Exhaust Speed	< 4sec (from 300 to 15 mmHg in a 500cc tank)				
寿命测试 Life Test	≥ 200,000 Times (ON 5秒, OFF 5秒)				
气密性 Leakage	<3mmHg/min (under 300 mmHg in a 500cc tank)				
使用温度 Operation Temperature	0 ~50°C 30% to 85%RH				
模式 Type	Normally Opened				
重量 Weight	17g				

* Other parameters: according to customer demand for design/其他参数: 根据客户的需求设计.

PYF1-XD (一位一通常开阀)

腕式电磁阀
WRIST VALVE



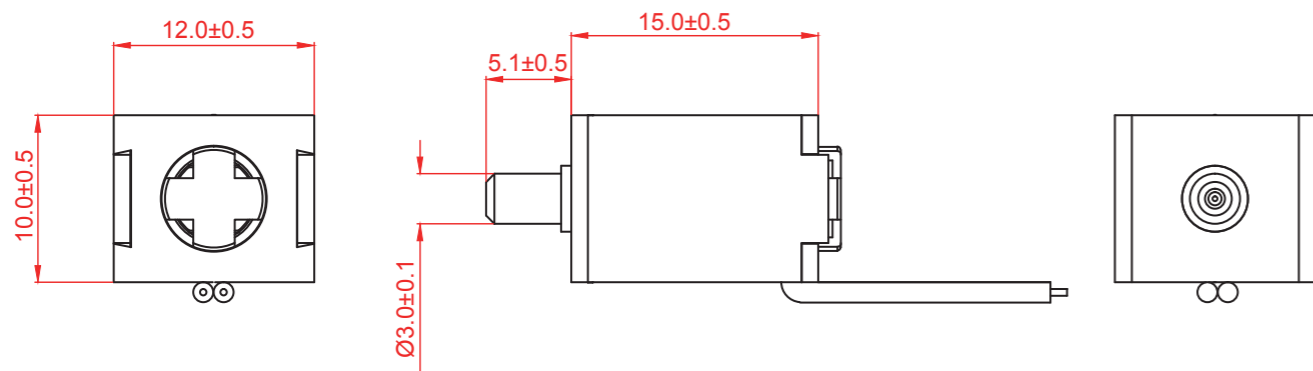
典型应用 Typical Applications

- Home appliances, medical, beauty, massage, adult products
家用电器、医疗、美容、按摩、成人用品
- Sphygmomanometers, Adult products, Massagers, Essential oil machines, Booster technology
血压计、成人用品、按摩器、精油机、增压技术

外形尺寸

Dimension

WEIGHT: 10.0g(APPROX)
UNIT: MILLIMETERS



产品规格

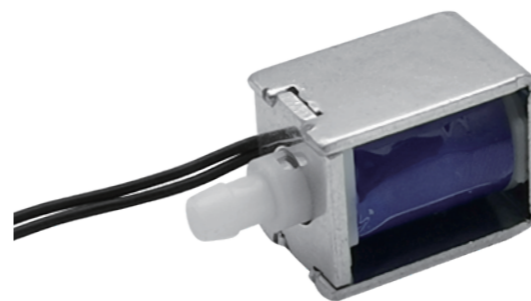
Product Specifications

额定电压 Rated Voltage	DC 3V	DC 3.7V	DC 6V
额定电流 Rated Current	100 ± 10%mA	82 ± 10%mA	75 ± 10%mA
直流阻抗 DC Resistance	30 ± 10%Ω	45 ± 10%Ω	80 ± 10%Ω
功率 Power	0.30 W	0.30 W	0.45 W
气嘴口径 Air Tap O.D.	Ø3.0mm		
最大压力 Maximum Pressure	40KPa(300mmHg)		
媒介 Medium	Air		
排气速度 Exhaust Speed	< 4sec (from 300 to 15 mmHg in a 100cc tank)		
寿命测试 Life Test	≥ 200,000 Times (ON 5秒, OFF 5秒)		
气密性 Leakage	<3mmHg/min (under 300 mmHg in a 100cc tank)		
使用温度 Operation Temperature	0 ~50°C 30% to 85%RH		
模式 Type	Normally Opened		
重量 Weight	10g		

* Other parameters: according to customer demand for design/其他参数: 根据客户的需求设计.

PYF2-XZ (一位一通真空阀)

真空电磁阀
VACUUM VALVE



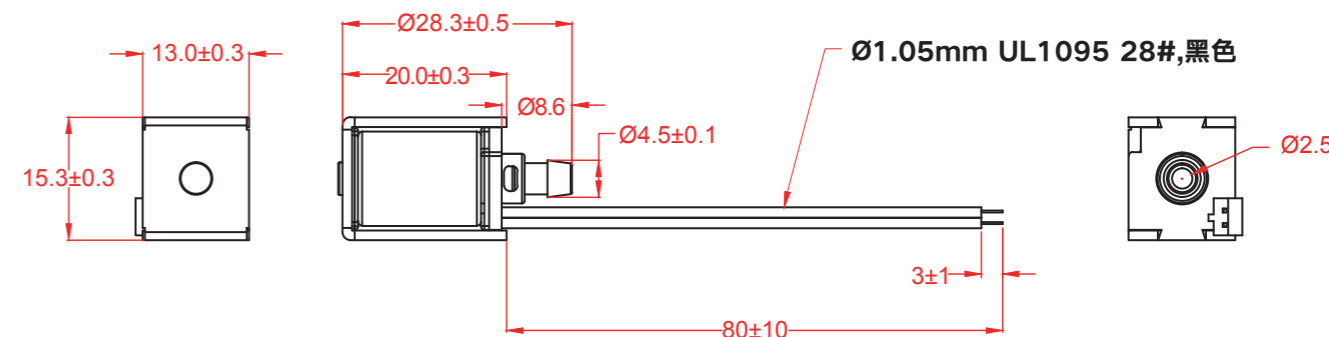
典型应用 Typical Applications

- Home appliances, medical, beauty, massage, adult products
家用电器、医疗、美容、按摩、成人用品
- Breast pump, Adult products, Massagers, Essential oil machines, Booster technology
吸奶器、成人用品、按摩器、精油机、增压技术

外形尺寸

Dimension

WEIGHT: 17.0g(APPROX)
UNIT: MILLIMETERS



产品规格

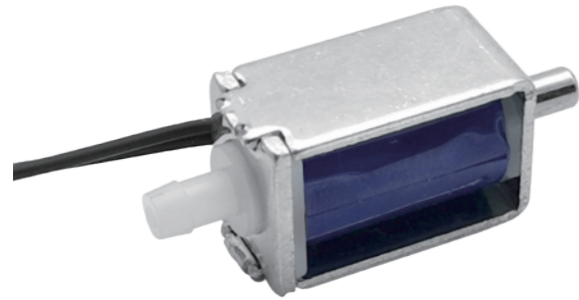
Product Specifications

额定电压 Rated Voltage	DC 3V	DC 3.7V	DC 4.5V	DC 6.0V	DC 12.0V
额定电流 Rated Current	600 ± 10%mA	528 ± 10%mA	409 ± 10%mA	375 ± 10%mA	240 ± 10%mA
直流阻抗 DC Resistance	5 ± 10%Ω	7 ± 10%Ω	11 ± 10%Ω	16 ± 10%Ω	50 ± 10%Ω
功率 Power	1.8 W	1.95 W	1.84 W	2.25 W	2.88 W
气嘴口径 Air Tap O.D.	Ø4.5mm				
最大压力 Maximum Pressure	- 60KPa(- 450mmHg)				
媒介 Medium	Air				
排气速度 Exhaust Speed	< 1.0sec (from - 60KPa to 0KPa in a 100cc tank)				
寿命测试 Life Test	≥ 200,000 Times (ON 5秒, OFF 5秒)				
气密性 Leakage	< - 1KPa/sec (under - 60KPa in a 100cc tank)				
使用温度 Operation Temperature	0 ~50°C 30% to 85%RH				
模式 Type	Normally Closed				
重量 Weight	17g				

* Other parameters: according to customer demand for design/其他参数: 根据客户的需求设计.

PYF2-XA (二位二通常闭阀)

二通电磁阀
TWO-WAY VALVE



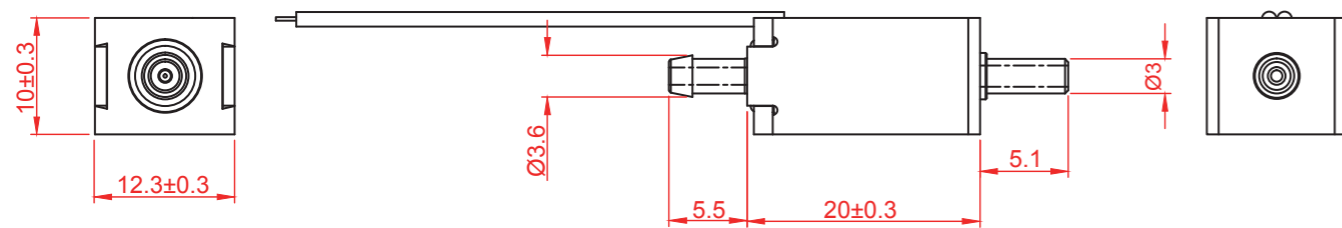
典型应用 Typical Applications

- Home appliances, medical, beauty, massage, adult products
家用电器、医疗、美容、按摩、成人用品
- Sphygmomanometers, Adult products, Massagers, Essential oil machines, Booster technology
血压计、成人用品、按摩器、精油机、增压技术

外形尺寸

Dimension

WEIGHT: 10.0g(APPROX)
UNIT: MILLIMETERS



产品规格

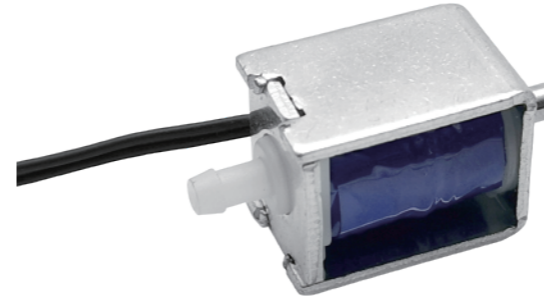
Product Specifications

额定电压 Rated Voltage	DC 3V	DC 3.7V	DC 6V	DC 9.0V	DC 12.0V
额定电流 Rated Current	375 ± 10%mA	370 ± 10%mA	240 ± 10%mA	225 ± 10%mA	200 ± 10%mA
直流阻抗 DC Resistance	8 ± 10%Ω	10 ± 10%Ω	25 ± 10%Ω	40 ± 10%Ω	60 ± 10%Ω
功率 Power	1.12 W	1.37 W	1.44 W	2.02 W	2.4 W
气嘴口径 Air Tap O.D.	Ø3.0mm				
最大压力 Maximum Pressure	40KPa(300mmHg)				
媒介 Medium	Air				
排气速度 Exhaust Speed	< 4s (from 300 to 15 mmHg in a 100cc tank)				
寿命测试 Life Test	≥ 200,000 Times (ON 5秒, OFF 5秒)				
气密性 Leakage	<3mmHg/min under 300 mmHg in a 100cc tank				
使用温度 Operation Temperature	0 ~50°C 30% to 85%RH				
模式 Type	Normally Opened				
重量 Weight	10g				

* Other parameters: according to customer demand for design/其他参数: 根据客户的需求设计.

PYF2-XB (二位二通常闭阀)

二通电磁阀
TWO-WAY VALVE



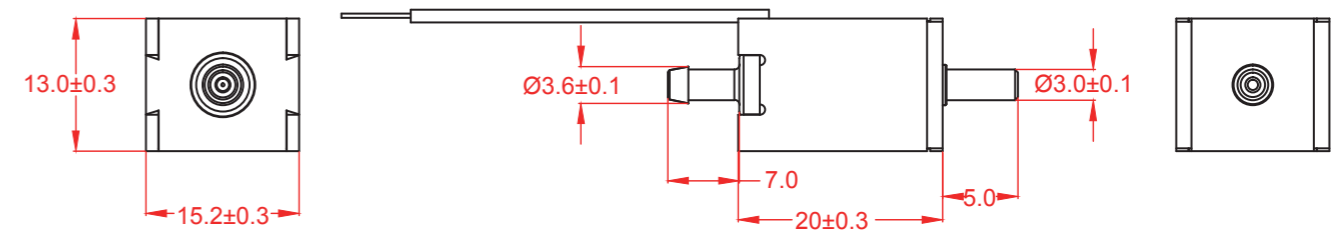
典型应用 Typical Applications

- Home appliances, medical, beauty, massage, adult products
家用电器、医疗、美容、按摩、成人用品
- Sphygmomanometers, Adult products, Massagers, Essential oil machines, Booster technology
血压计、成人用品、按摩器、精油机、增压技术

外形尺寸

Dimension

WEIGHT: 16.5g(APPROX)
UNIT: MILLIMETERS



产品规格

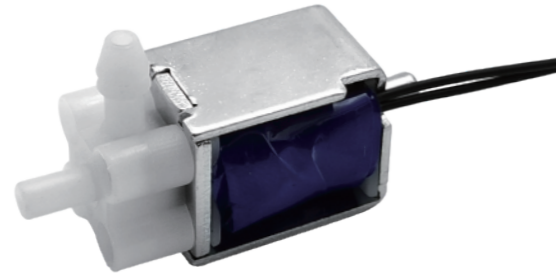
Product Specifications

额定电压 Rated Voltage	DC 3V	DC 3.7V	DC 6V	DC 9.0V	DC 12.0V
额定电流 Rated Current	375 ± 10%mA	370 ± 10%mA	240 ± 10%mA	225 ± 10%mA	200 ± 10%mA
直流阻抗 DC Resistance	8 ± 10%Ω	10 ± 10%Ω	25 ± 10%Ω	40 ± 10%Ω	60 ± 10%Ω
功率 Power	1.12 W	1.37 W	1.44 W	2.02 W	2.4 W
气嘴口径 Air Tap O.D.	Ø3.0mm				
最大压力 Maximum Pressure	40KPa(300mmHg)				
媒介 Medium	Air				
排气速度 Exhaust Speed	< 4s (from 300 to 15 mmHg in a 500cc tank)				
寿命测试 Life Test	≥ 200,000 Times (ON 5秒, OFF 5秒)				
气密性 Leakage	<3mmHg/min (under 300 mmHg in a 500cc tank)				
使用温度 Operation Temperature	0 ~50°C 30% to 85%RH				
模式 Type	Normally Closed				
重量 Weight	16.5g				

* Other parameters: according to customer demand for design/其他参数: 根据客户的需求设计.

PYF3-XA (二位三通阀)

三通电磁阀
THREE-WAY VALVE

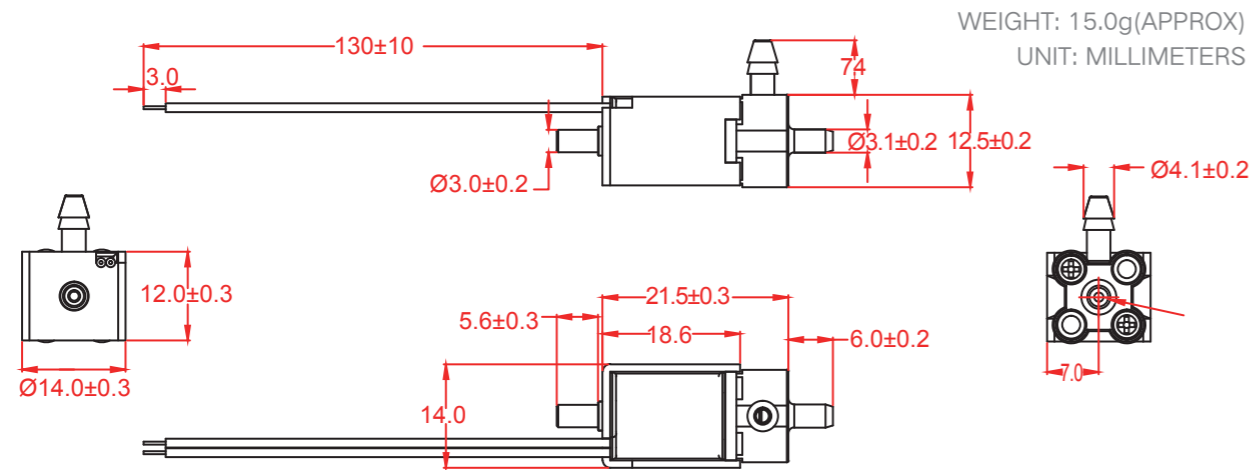


典型应用 Typical Applications

- Home appliances, medical, beauty, massage, adult products
家用电器、医疗、美容、按摩、成人用品
- Sphygmomanometers, Adult products, Massagers, Essential oil machines, Booster technology
血压计、成人用品、按摩器、精油机、增压技术

外形尺寸

Dimension



产品规格

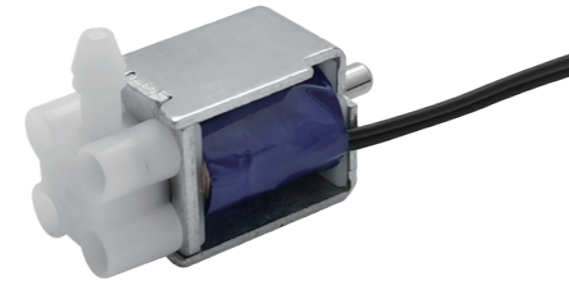
Product Specifications

额定电压 Rated Voltage	DC 3V	DC 3.7V	DC 6V	DC 12.0V	DC 24.0V
额定电流 Rated Current	120 ± 10%mA	105 ± 10%mA	100 ± 10%mA	100 ± 10%mA	120 ± 10%mA
直流阻抗 DC Resistance	25 ± 10%Ω	35 ± 10%Ω	60 ± 10%Ω	120 ± 10%Ω	200 ± 10%Ω
功率 Power	0.36 W	0.39 W	0.6 W	1.2 W	2.88 W
气嘴口径 Air Tap O.D.	Ø3.0mm				
最大压力 Maximum Pressure	40KPa(300mmHg)				
媒介 Medium	Air				
排气速度 Exhaust Speed	< 4s (from 300 to 15 mmHg in a 100cc tank)				
寿命测试 Life Test	≥ 200,000 Times (ON 5秒, OFF 5秒)				
气密性 Leakage	<3mmHg/min (under 300 mmHg in a 100cc tank)				
使用温度 Operation Temperature	0 ~50°C 30% to 85%RH				
模式 Type	Normally Opened				
重量 Weight	15g				

* Other parameters: according to customer demand for design/其他参数：根据客户的需求设计。

PYF3-XA (二位三通平头阀)

三通电磁阀
THREE-WAY VALVE

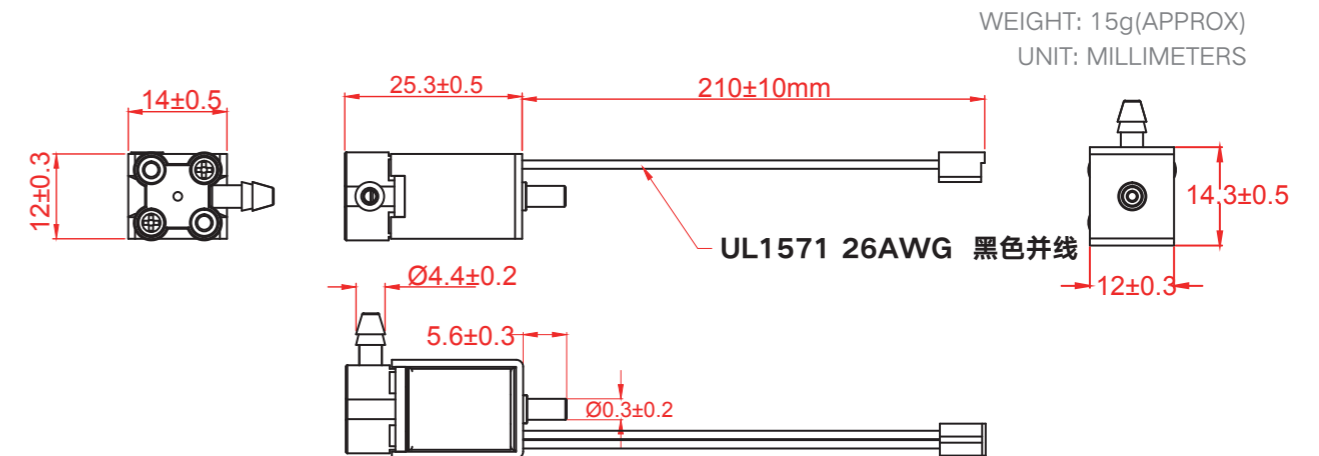


典型应用 Typical Applications

- Home appliances, medical, beauty, massage, adult products
家用电器、医疗、美容、按摩、成人用品
- Sphygmomanometers, Adult products, Massagers, Essential oil machines, Booster technology
血压计、成人用品、按摩器、精油机、增压技术

外形尺寸

Dimension



产品规格

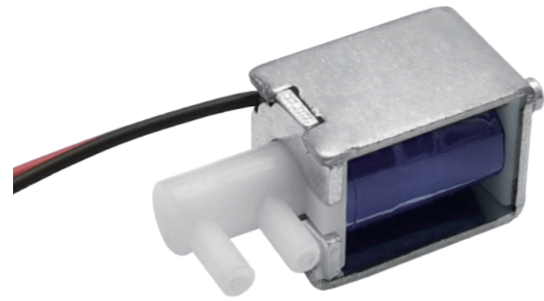
Product Specifications

额定电压 Rated Voltage	DC 3V	DC 3.7V	DC 6V	DC 12.0V	DC 24.0V
额定电流 Rated Current	120 ± 10%mA	105 ± 10%mA	100 ± 10%mA	100 ± 10%mA	120 ± 10%mA
直流阻抗 DC Resistance	25 ± 10%Ω	35 ± 10%Ω	60 ± 10%Ω	120 ± 10%Ω	200 ± 10%Ω
功率 Power	0.36 W	0.39 W	0.6 W	1.2 W	2.88 W
气嘴口径 Air Tap O.D.	Ø3.0mm				
最大压力 Maximum Pressure	40KPa(300mmHg)				
媒介 Medium	Air				
排气速度 Exhaust Speed	< 4s (from 300 to 15 mmHg in a 100cc tank)				
寿命测试 Life Test	≥ 200,000 Times (ON 5秒, OFF 5秒)				
气密性 Leakage	<3mmHg/min (under 300 mmHg in a 100cc tank)				
使用温度 Operation Temperature	0 ~50°C 30% to 85%RH				
模式 Type	Normally Opened				
重量 Weight	15g				

* Other parameters: according to customer demand for design/其他参数：根据客户的需求设计。

PYF3-XA (F款二位三通)

三通电磁阀
THREE-WAY VALVE



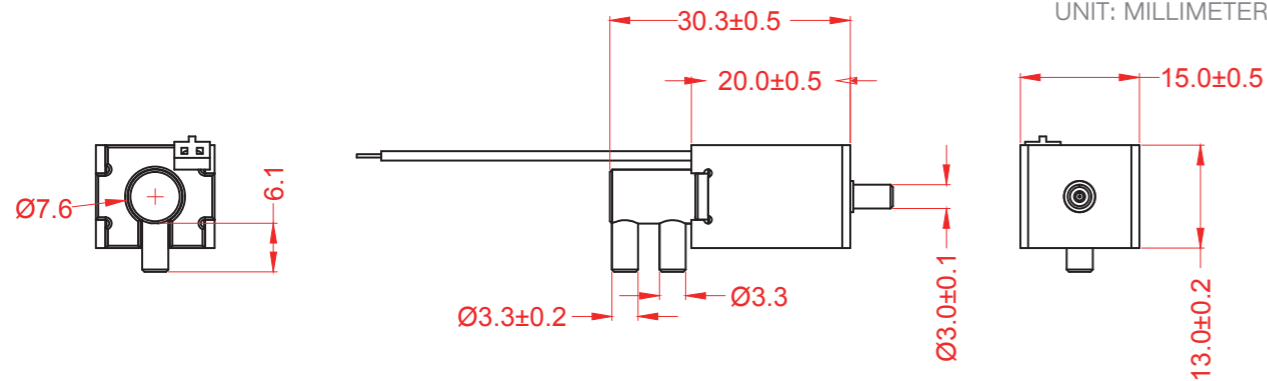
典型应用 Typical Applications

- ▶ Home appliances, medical, beauty, massage, adult products
家用电器、医疗、美容、按摩、成人用品
- ▶ Sphygmomanometers, Adult products, Massagers, Essential oil machines, Booster technology
血压计、成人用品、按摩器、精油机、增压技术

外形尺寸

Dimension

WEIGHT: 15.0g(APPROX)
UNIT: MILLIMETERS



产品规格

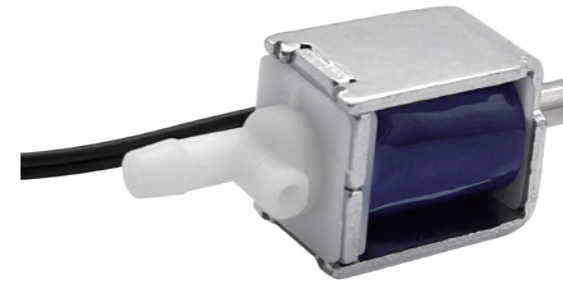
Product Specifications

额定电压 Rated Voltage	DC 3V	DC 3.7V	DC 6V	DC 12.0V	DC 24.0V
额定电流 Rated Current	120 ± 10%mA	105 ± 10%mA	100 ± 10%mA	100 ± 10%mA	120 ± 10%mA
直流阻抗 DC Resistance	25 ± 10%Ω	35 ± 10%Ω	60 ± 10%Ω	120 ± 10%Ω	200 ± 10%Ω
功率 Power	0.36 W	0.39 W	0.6 W	1.2 W	2.88 W
气嘴口径 Air Tap O.D.	Ø3.3mm				
最大压力 Maximum Pressure	40KPa(300mmHg)				
媒介 Medium	Air				
排气速度 Exhaust Speed	< 4s (from 300 to 15 mmHg in a 100cc tank)				
寿命测试 Life Test	≥ 200,000 Times (ON 5秒, OFF 5秒)				
气密性 Leakage	<3mmHg/min (under 300 mmHg in a 100cc tank)				
使用温度 Operation Temperature	0 ~50°C 30% to 85%RH				
模式 Type	Normally Opened				
重量 Weight	15g				

* Other parameters: according to customer demand for design/其他参数: 根据客户的需求设计.

PYF3-XEA (眼部按摩三通阀)

三通电磁阀
THREE-WAY VALVE



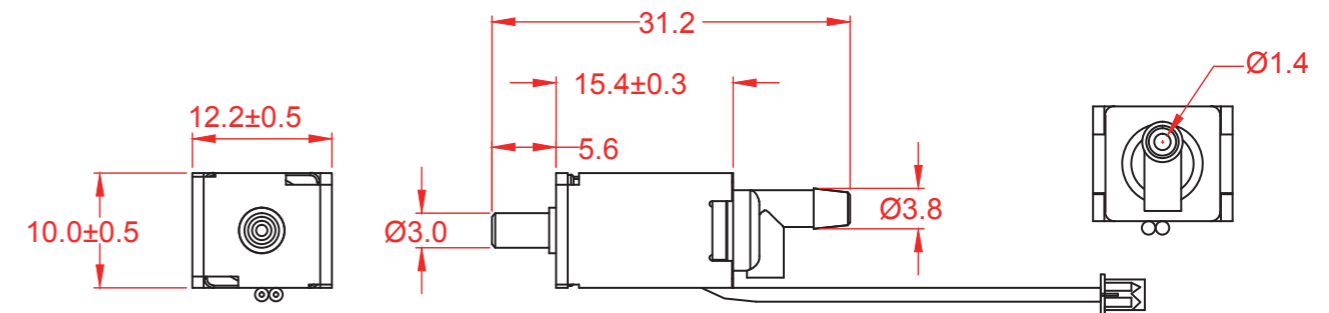
典型应用 Typical Applications

- ▶ Home appliances, medical, beauty, massage, adult products
家用电器、医疗、美容、按摩、成人用品
- ▶ Eye Massager, Adult products, Massagers, Booster technology
眼部按摩器、成人用品、按摩器、增压技术

外形尺寸

Dimension

WEIGHT: 9.0g(APPROX)
UNIT: MILLIMETERS



产品规格

Product Specifications

额定电压 Rated Voltage	DC 3V	DC 3.7V	DC 6V	DC 9.0V	DC 12.0V
额定电流 Rated Current	375 ± 10%mA	308 ± 10%mA	240 ± 10%mA	225 ± 10%mA	200 ± 10%mA
直流阻抗 DC Resistance	8 ± 10%Ω	12 ± 10%Ω	25 ± 10%Ω	40 ± 10%Ω	60 ± 10%Ω
功率 Power	1.12 W	1.37 W	1.44 W	2.02 W	2.4 W
气嘴口径 Air Tap O.D.	Ø3.8mm				
最大压力 Maximum Pressure	40KPa(300mmHg)				
媒介 Medium	Air				
排气速度 Exhaust Speed	< 4s (from 300 to 15 mmHg in a 100cc tank)				
寿命测试 Life Test	≥ 200,000 Times (ON 5秒, OFF 5秒)				
气密性 Leakage	<3mmHg/min (under 300 mmHg in a 100cc tank)				
使用温度 Operation Temperature	0 ~50°C 30% to 85%RH				
模式 Type	Normally Opened				
重量 Weight	9g				

* Other parameters: according to customer demand for design/其他参数: 根据客户的需求设计.

PYF3-XEB (眼部按摩三通阀)

三通电磁阀
THREE-WAY VALVE



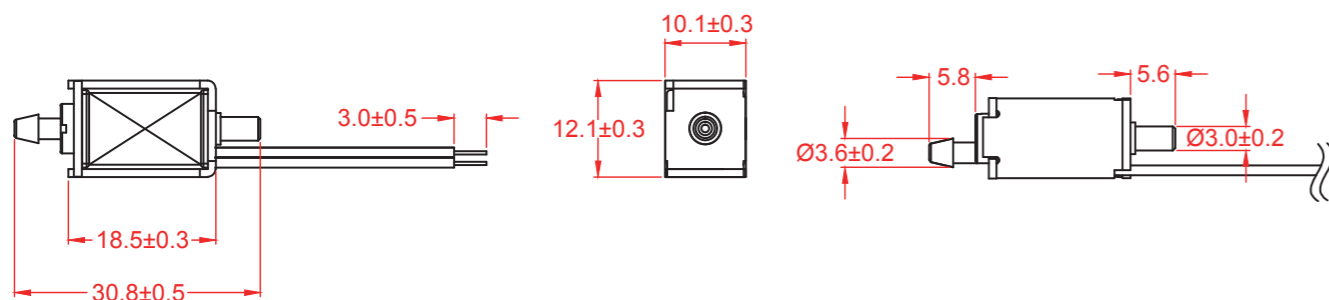
典型应用 Typical Applications

- Home appliances, medical, beauty, massage, adult products
家用电器、医疗、美容、按摩、成人用品
- Eye Massager, Adult products, Massagers, Booster technology
眼部按摩器、成人用品、按摩器、增压技术

外形尺寸

Dimension

WEIGHT: 9.0g(APPROX)
UNIT: MILLIMETERS



产品规格

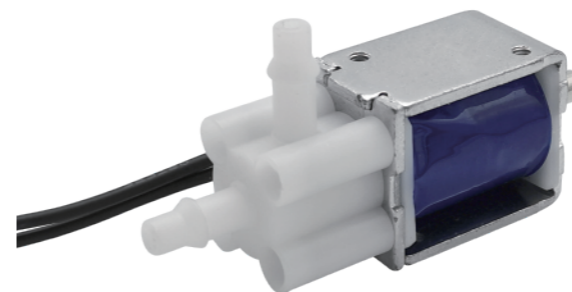
Product Specifications

额定电压 Rated Voltage	DC 3V	DC 3.7V	DC 6V	DC 9.0V	DC 12.0V
额定电流 Rated Current	375 ± 10%mA	308 ± 10%mA	240 ± 10%mA	225 ± 10%mA	200 ± 10%mA
直流阻抗 DC Resistance	8 ± 10%Ω	12 ± 10%Ω	25 ± 10%Ω	40 ± 10%Ω	60 ± 10%Ω
功率 Power	1.12 W	1.37 W	1.44 W	2.02 W	2.4 W
气嘴口径 Air Tap O.D.	Ø3.0mm				
最大压力 Maximum Pressure	40KPa(300mmHg)				
媒介 Medium	Air				
排气速度 Exhaust Speed	< 4s (from 300 to 15 mmHg in a 100cc tank)				
寿命测试 Life Test	≥ 200,000 Times (ON 5秒, OFF 5秒)				
气密性 Leakage	<3mmHg/min (under 300 mmHg in a 100cc tank)				
使用温度 Operation Temperature	0 ~50°C 30% to 85%RH				
模式 Type	Normally Opened				
重量 Weight	9g				

* Other parameters: according to customer demand for design/其他参数: 根据客户的需求设计.

PYF3-XN (制氧机三通阀)

三通电磁阀
THREE-WAY VALVE



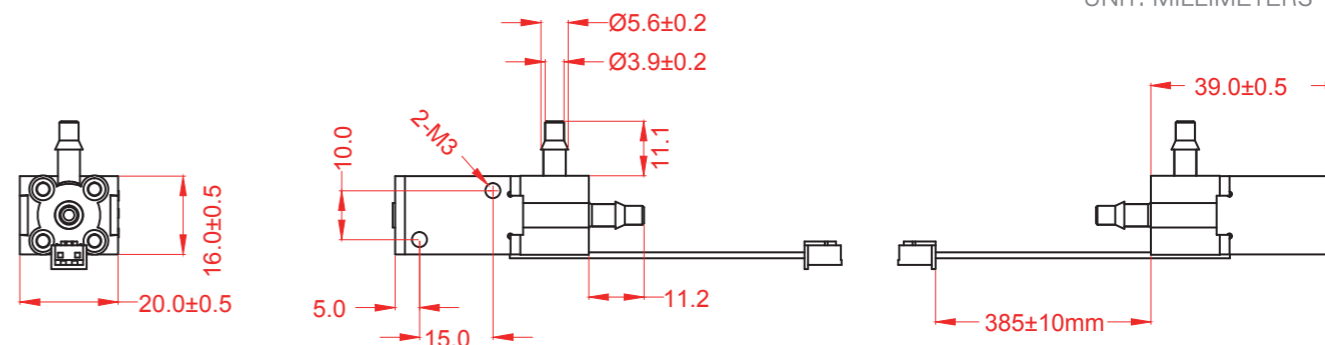
典型应用 Typical Applications

- Home appliances, medical, beauty, massage, adult products
家用电器、医疗、美容、按摩、成人用品
- Oxygenator, Cosmetic instrument, Massagers, Booster technology
制氧机、美容仪、按摩器、增压技术

外形尺寸

Dimension

WEIGHT: 42.0g(APPROX)
UNIT: MILLIMETERS



产品规格

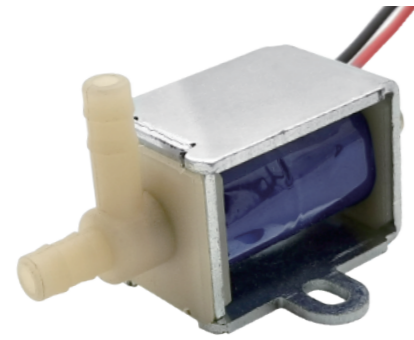
Product Specifications

额定电压 Rated Voltage	DC 6V	DC 12V	DC 24V
额定电流 Rated Current	200 ± 10%mA	120 ± 10%mA	120 ± 10%mA
直流阻抗 DC Resistance	30 ± 10%Ω	100 ± 10%Ω	200 ± 10%Ω
功率 Power	1.2 W	1.44 W	2.88 W
气嘴口径 Air Tap O.D.	Ø5.6mm		
最大压力 Maximum Pressure	40KPa(300mmHg)		
媒介 Medium	Air		
排气速度 Exhaust Speed	< 4s (from 300 to 15 mmHg in a 500cc tank)		
寿命测试 Life Test	≥ 200,000 Times (ON 5秒, OFF 5秒)		
气密性 Leakage	<3mmHg/min under 300 mmHg in a 500cc tank		
使用温度 Operation Temperature	0 ~50°C 30% to 85%RH		
模式 Type	Normally Opened		
重量 Weight	42g		

* Other parameters: according to customer demand for design/其他参数: 根据客户的需求设计.

PYF3-XL (脚部按摩三通阀)

三通电磁阀
THREE-WAY VALVE



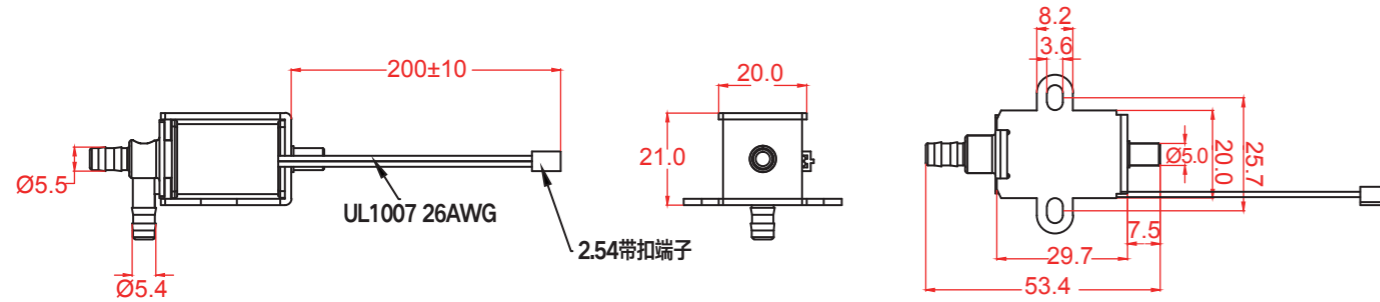
典型应用 Typical Applications

- Home appliances, medical, beauty, massage, adult products
家用电器、医疗、美容、按摩、成人用品
- Massagers, Beauty Instruments, Booster technology
按摩器、美容仪器、增压技术

外形尺寸

Dimension

WEIGHT: 48.0g(APPROX)
UNIT: MILLIMETERS



产品规格

Product Specifications

额定电压 Rated Voltage	DC 6V	DC 12V	DC 24V
额定电流 Rated Current	300 ± 10%mA	200 ± 10%mA	140 ± 10%mA
直流阻抗 DC Resistance	20 ± 10%Ω	60 ± 10%Ω	170 ± 10%Ω
功率 Power	1.8 W	2.4 W	3.36 W
气嘴口径 Air Tap O.D.	Ø5.5mm		
最大压力 Maximum Pressure	40KPa(300mmHg)		
媒介 Medium	Air		
排气速度 Exhaust Speed	< 2s (from 300 to 15 mmHg in a 500cc tank)		
寿命测试 Life Test	≥ 200,000 Times (ON 5秒, OFF 5秒)		
气密性 Leakage	<3mmHg/min (under 300 mmHg in a 500cc tank)		
使用温度 Operation Temperature	0 ~50°C 30% to 85%RH		
模式 Type	Normally Opened		
重量 Weight	48g		

* Other parameters: according to customer demand for design/其他参数: 根据客户的需求设计.

PYF2-XG (二通水阀)

二通水阀
TWO-WAY VALVE



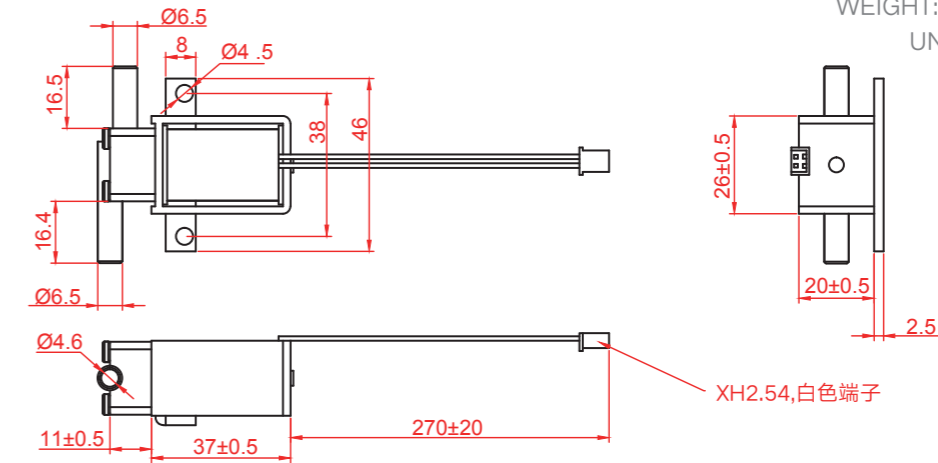
典型应用 Typical Applications

- Home appliances, medical, beauty, massage, adult products
家用电器、医疗、美容、按摩、成人用品
- Beauty instruments, Water dispenser, small household appliances
美容仪器、饮水机、小家电

外形尺寸

Dimension

WEIGHT: 100.0g(APPROX)
UNIT: MILLIMETERS



产品规格

Product Specifications

额定电压 Rated Voltage	DC 6V	DC 12V	DC 24V
额定电流 Rated Current	300 ± 10%mA	240 ± 10%mA	240 ± 10%mA
直流阻抗 DC Resistance	20 ± 10%Ω	50 ± 10%Ω	100 ± 10%Ω
功率 Power	1.8 W	2.88 W	5.76 W
气嘴口径 Air Tap O.D.	Ø6.5mm		
最大压力 Maximum Pressure	100KPa(14.5Psi)		
媒介 Medium	Water		
排气速度 Exhaust Speed	1.0L/Min		
寿命测试 Life Test	≥ 200,000 Times (ON 5秒, OFF 5秒)		
气密性 Leakage	<10 mmHg/min (under 300 mmHg in a 100cc tank)		
使用温度 Operation Temperature	0 ~50°C 30% to 85%RH		
模式 Type	Normally Closed		
重量 Weight	100g		

* Other parameters: according to customer demand for design/其他参数: 根据客户的需求设计.

PYF3-XG (三通水阀)

三通水阀
THREE-WAY VALVE

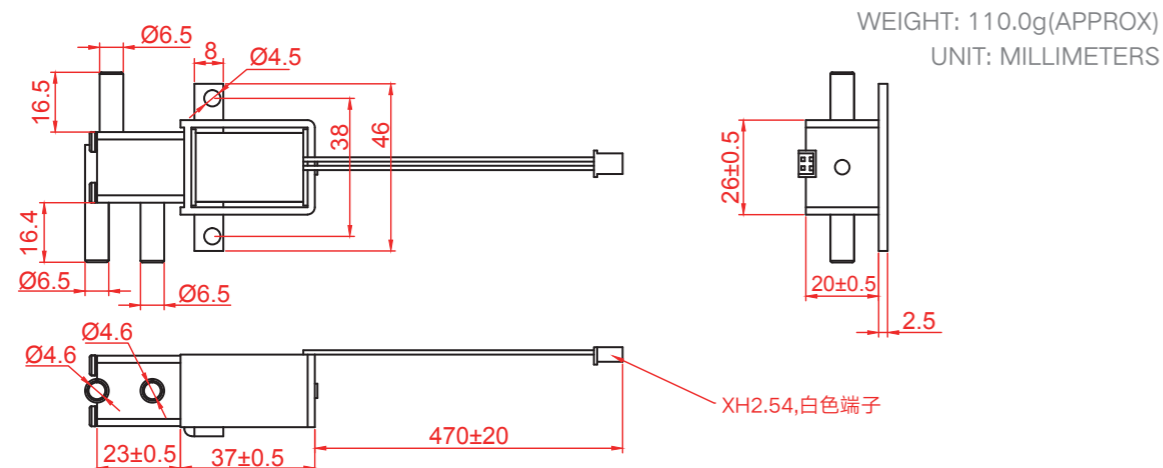


典型应用 Typical Applications

- Home appliances, medical, beauty, massage, adult products
家用电器、医疗、美容、按摩、成人用品
- Beauty instruments, Water dispenser, small household appliances
美容仪器、饮水机、小家电

外形尺寸

Dimension



产品规格

Product Specifications

额定电压 Rated Voltage	DC 6V	DC 12V	DC 24V
额定电流 Rated Current	300 ± 10%mA	240 ± 10%mA	240 ± 10%mA
直流阻抗 DC Resistance	20 ± 10%Ω	50 ± 10%Ω	100 ± 10%Ω
功率 Power	1.8 W	2.88 W	5.76 W
气嘴口径 Air Tap O.D.	Ø6.5mm		
最大压力 Maximum Pressure	100KPa(14.5Psi)		
媒介 Medium	Water		
排气速度 Exhaust Speed	1.0L/Min		
寿命测试 Life Test	≥ 200,000 Times (ON 5秒, OFF 5秒)		
气密性 Leakage	<10 mmHg/min under 300 mmHg in a 100cc tank		
使用温度 Operation Temperature	0 ~50°C 30% to 85%RH		
模式 Type	Normally Closed		
重量 Weight	110g		

* Other parameters: according to customer demand for design/其他参数: 根据客户的需求设计.

PYF3-XM (二通小水阀)

二通电磁阀
WATER VALVE

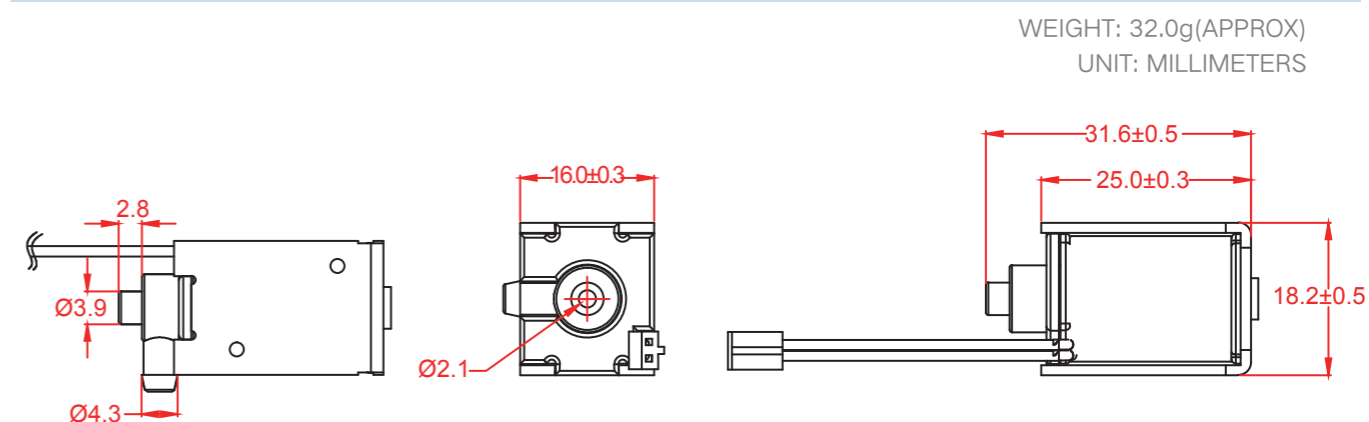


典型应用 Typical Applications

- Home appliances, medical, beauty, massage, adult products
家用电器、医疗、美容、按摩、成人用品
- Beauty instruments, adult products, small household appliances
美容仪器、成人用品、小家电

外形尺寸

Dimension



产品规格

Product Specifications

额定电压 Rated Voltage	DC 3V	DC 3.7V	DC 5V	DC 6V	DC 12.0V
额定电流 Rated Current	500 ± 10%mA	410 ± 10%mA	330 ± 10%mA	300 ± 10%mA	200 ± 10%mA
直流阻抗 DC Resistance	6 ± 10%Ω	9 ± 10%Ω	15 ± 10%Ω	20 ± 10%Ω	60 ± 10%Ω
功率 Power	1.5 W	1.52 W	1.65 W	1.8 W	2.4 W
气嘴口径 Air Tap O.D.	Ø3.9mm				
最大压力 Maximum Pressure	100KPa(14.5Psi)				
媒介 Medium	Water				
排气速度 Exhaust Speed	200mL/Min				
寿命测试 Life Test	≥ 200,000 Times (ON 5秒, OFF 5秒)				
气密性 Leakage	<10 mmHg/min (under 300 mmHg in a 100cc tank)				
使用温度 Operation Temperature	0 ~50°C 30% to 85%RH				
模式 Type	Normally Closed				
重量 Weight	32g				

* Other parameters: according to customer demand for design/其他参数: 根据客户的需求设计.

MODERN TESTING EQUIPMENT

现代化精密检测设备

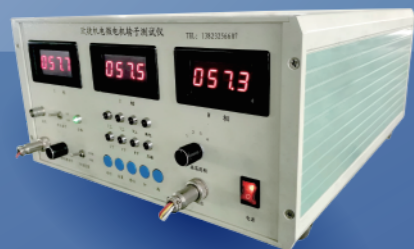
HARDNESS TESTER
硬度检测仪



TWO DIMENSIONAL MACHINE
二次元机



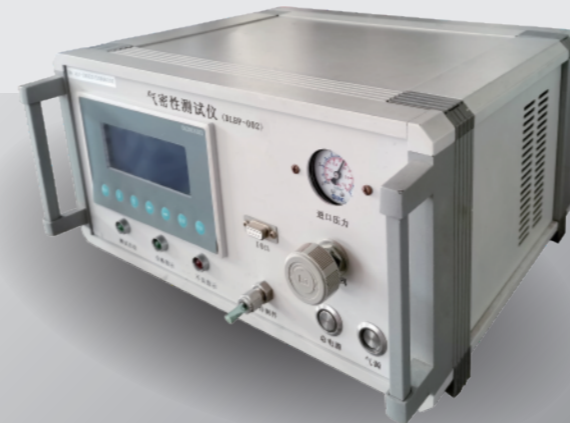
MICROMOTOR ROTOR TESTER
微电机转子测试仪



SALT SPRAY TESTER
盐雾试验机



AIR TIGHTNESS TESTER
气密性测试仪



HIGH AND LOW TEMPERATURE TESTER
高低温测试仪

